

Clopyralid and Triclopyr in River Water - LC/MS

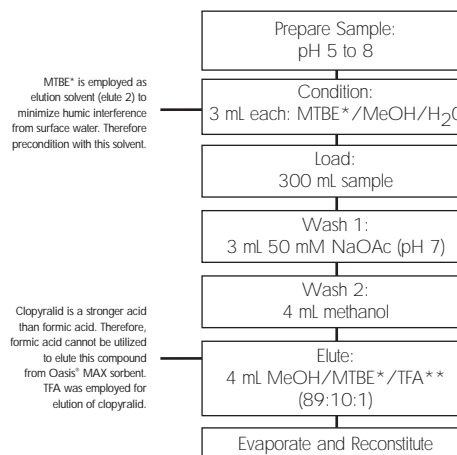
Conditions

Column: XTerra® MS C₁₈ 2.1 x 100 mm, 3.5 µm
 Part Number: 186000404
 Mobile Phase A: 10 mM TFA, pH 2.1
 Mobile Phase B: ACN
 Gradient:

Time (min)	%A	%B
0.0	75	25
6.0	10	90

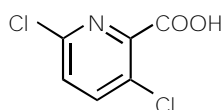
 Flow rate: 0.2 mL/min
 Injection Volume: 20 µL
 Detection: MS ESI⁺
 Multiple Selected-Ion Recording (SIR)
 Instrument: Alliance® 2695, Micromass® ZQ™

Optimized Oasis® MAX method for clopyralid and triclopyr
 Conditions for Oasis® MAX Cartridge, 6 cc, 500 mg
 Part Number 186000865

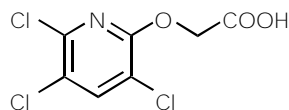


Compounds:

1. Clopyralid
2. Triclopyr



Clopyralid



Triclopyr

* methyl t-butyl ether
 diethyl ether can be used as an alternative to MTBE
 ** TFA - trifluoroacetic acid

0.4 µg/L spike level - river water

