

Waters® Millennium®32 Software E-Mail Capabilities

Is this a concern?

Our staff frequently need to communicate HPLC and GC results between various departments, and on occasion, to international locations. Are efficient electronic data transfer techniques available to users of chromatography equipment?

Automatically Batch Process and E-Mail Reports to an Adjacent Lab or International Collaborator

Millennium³² software, Version 3.2, allows users to efficiently communicate chromatographic results via the Internet. Figures 1 - 3 indicate how raw data files can be "batch processed" and automatically forwarded using E-mail. Simply choose the raw data set to be processed, then automatically export the processed results (as EMF, PDF, or ASCII attachments) to your E-mail program for delivery to anyone having access to the Internet and an E-mail viewer. The available document formats include:

- **Enhanced Metafile (EMF)** – Converts the generated report into a single enhanced metafile (.emf). Enhanced metafiles are an updated version of the Windows® Metafile (WMF) format. All information in the report is included in the .emf (tables, plots, results, curves, etc.).
- **PDF File** – Converts the generated report into a single Portable Document Format (.pdf) file. PDF is the standard developed by Adobe® for use by its Acrobat® line of products. All information in the report is included in the .pdf file (tables, plots, results, curves, and so on).
- **ASCII Text File** – Converts the generated report into a single text document file (.txt), where only text in the report is included in the ASCII file. Graphic images (such as plot and curves) are not included in the ASCII text file.

Figure 1: Data can be automatically batch processed with summary reports and sent via the Internet

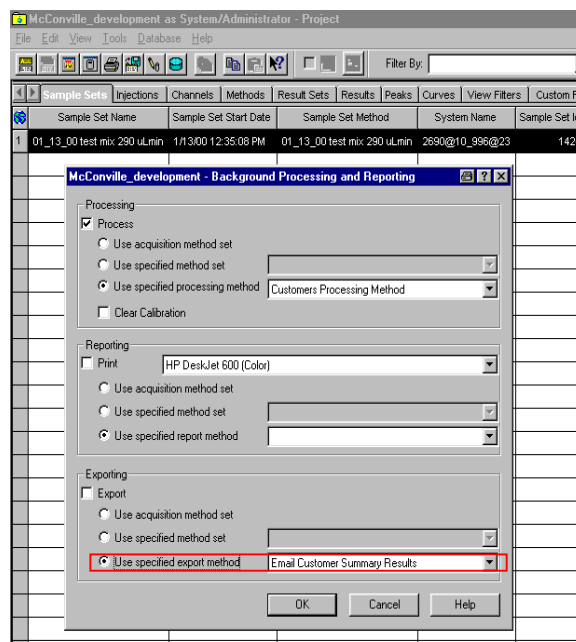
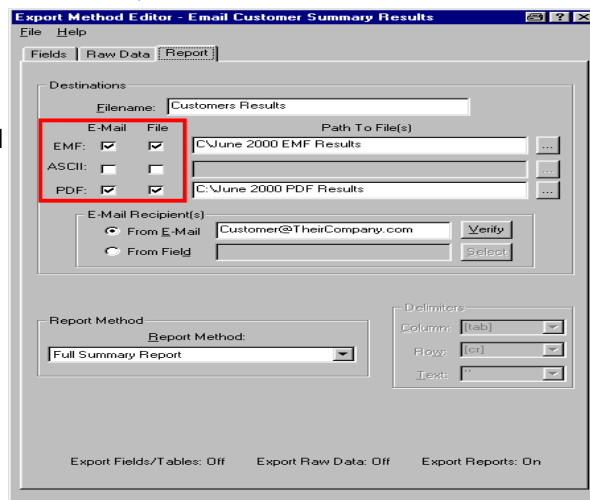


Figure 2: E-mailed results can be saved in a variety of industry recognized formats including EMF, PDF, and ASCII



Flexibility to Preview then E-Mail

On occasion, a review of the results from a single chromatogram may be required at a remote site. This is a simple task with Millennium³² software, Version 3.2.

1) First, bring the selected chromatogram into the "Print Preview" view screen (Figure 3).

2) Next, activate the "send E-mail" function from the toolbar options view. Select the format for the E-mail attachment (Figure 4).

3) Finally, the user's MAPI-compliant E-mail program opens. Address the Millennium³² E-mail and send. The chromatogram attachment with descriptive text is delivered (Figure 5).

Figure 3: A chromatogram is conveniently reviewed using Millennium³² "Print Preview"

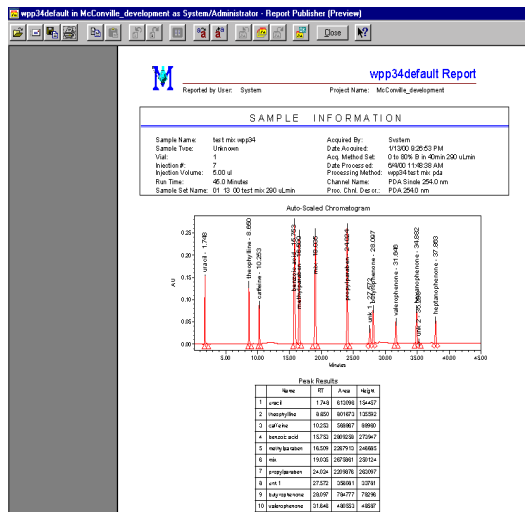


Figure 4: Simply select the desired document format and E-mail

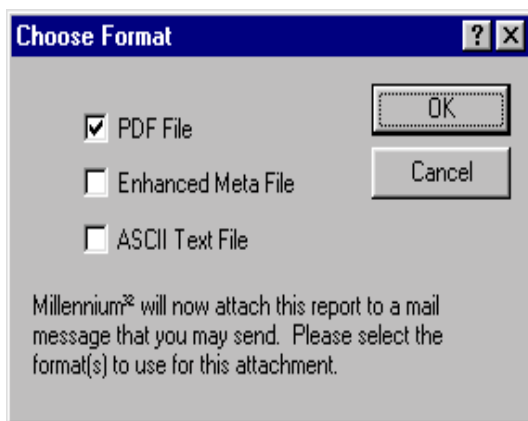
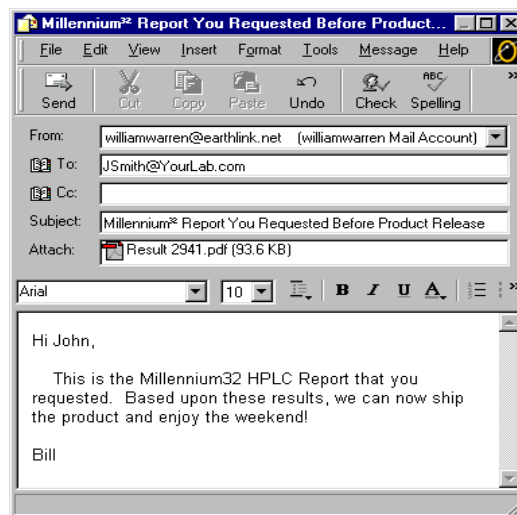


Figure 5: The electronic address is completed and the chromatogram, as an attachment, is sent via the Internet or a corporate Intranet



Summary

- Millennium³² software, Version 3.2, offers scientists the flexibility to efficiently transfer completed HPLC or GC information electronically.
- Customized reports can be created and E-mailed as attachments in a variety of formats including EMF, PDF, and ASCII. If desired, copies of all E-mailed attachments can be automatically archived for future reference.
- The enhanced capability of Millennium³² software will help lab managers and supervisors, bench chemists, and data reduction specialists communicate important chromatographic information in a timely, reliable, and cost effective fashion.