

Waters® Millennium³² Software WebServer Real-time Information From Remote Sites

The Millennium³² WebServer is a web-based application that makes Millennium³² software functionality available over the Internet or via a corporate Intranet. The WebServer lets you view real-time information, from your HPLC and GC systems at a remote site, via an internet browser such as Microsoft® Internet Explorer or Netscape® Communicator. A remote site can be an office or lab on another floor, in another building, country or even from home. Previously collected data (sample sets, injections, methods, result sets, results, and calibration curves) can be reviewed and printed.

From the WebServer welcome screen, enter your user name and password to access a Millennium³² database. All Millennium³² software security features and access privileges are still in effect when using WebServer.

You can view current acquisitions in real time or review previously collected data from any project or system that your access privileges allow.

Review Data : Results in project Defaults

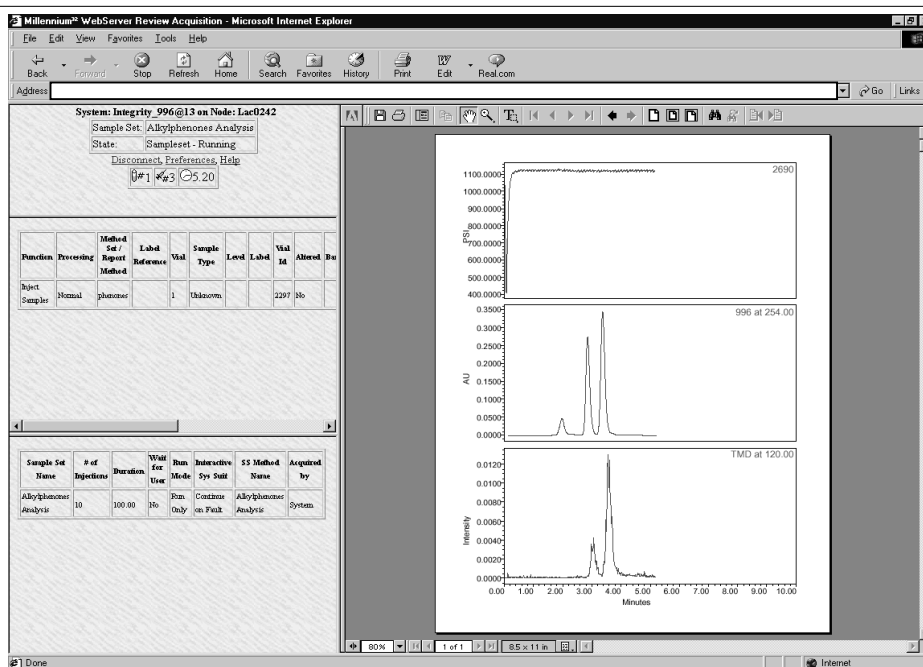
Filter By: Rows Selected: 7

To generate a report, select one or more rows from the following table, select a report method , and click .

Sample Sets		Injections	Channels	Methods	Result Sets	Results	Curves		
	#	SampleName	Vial	Injection	Sample Type	Processed Channel Descr.	Date Acquired	Date Processed	Processing Method
<input checked="" type="checkbox"/>	1	PQ Unk. 4	7	1	Unknown	254nm	9/17/97 5:37:56 PM	9/16/99 11:28:57 AM	LC PQ
<input checked="" type="checkbox"/>	2	PQ Unk. 3	6	1	Unknown	254nm	9/17/97 5:30:59 PM	9/16/99 11:28:57 AM	LC PQ
<input type="checkbox"/>	3	PQ Unk. 2	5	1	Unknown	254nm	9/17/97 5:24:04 PM	9/16/99 11:28:57 AM	LC PQ
<input type="checkbox"/>	4	PQ Unk. 1	4	1	Unknown	254nm	9/17/97 5:17:07 PM	9/16/99 11:28:57 AM	LC PQ

Single or multiple results may be viewed using a predefined report method. The results are presented in an Adobe® Acrobat® PDF format that may be printed to a local printer, saved to disk, or e-mailed.

Waters Corporation 34 Maple Street Milford, MA 01757 508 478 2000



Current acquisitions may be viewed in real time. Time between updates is a user-definable preference.

Frequently Asked Questions about Millennium³² WebServer

Q: What version of Millennium³² software does the WebServer option require?

A: Millennium³² software version 3.2.

Q: Do I need Millennium³² software loaded on my remote PC?

A: Your remote PC (the one you might use from home, for example) is not required to have Millennium³² software loaded on it. Millennium³² software will need to be installed on the PC where the WebServer software resides.

Q: Can I load the WebServer software on a Millennium³² database server?

A: No. The WebServer software must be installed on a separate computer.

Q: What is the minimum hardware requirement for the WebServer?

A: Pentium® III 450 Mhz computer, with 128 MB RAM.

Q: What software does my remote PC need?

A: Your remote PC will need a frame-capable web browser (Microsoft Internet Explorer 5.01 or Netscape Communicator 4.71) and Adobe Acrobat Reader version 4.05.

Q: Does my PC need to be running a Windows®-based operating system?

A: No. The only requirement is a PC running a frame-capable web browser. For example, this PC may be a Macintosh® based system.

Q: Our company network is protected by firewall, how can I connect from home?

A: Working with your network administrator, you need to establish a secure method to pass through the firewall.

Q: Can anyone have access to the data?

A: Access privileges and security protocols that are defined by the Millennium³² software system administrator remain intact when data is viewed using the WebServer. If you have a valid Millennium³² software user name and password you can have data access.

Q: Can the entire world view my data?

A: Only if you choose. The network and system administrators have control over who is allowed access, so only those with valid Millennium³² software user names and passwords can have access to the data.

Q: What prevents my data from being deleted?

A: The WebServer provides read-only access to data that resides in Millennium³² software. Data, methods, reports and view filters can not be deleted, changed or created.

Q: Can raw data be reprocessed?

A: Raw data can not be reprocessed using the WebServer. It can only be viewed using predefined report methods.

Q: Can I start and stop instruments connected to the system?

A: At this time, instruments connected to the system can not be controlled from the remote site. Future versions of WebServer may allow some instrument control.

Q: Can new methods be created and old ones deleted?

A: New methods (of any type) can not be created or deleted.

Q: My question is not listed, where can I go for help or more information?

A: Contact your local Waters representative.

Summary: Using the Internet or corporate Intranet, Millennium³² software users can now check the status of chromatography systems and generate reports from Millennium³² results, which can be printed, saved to disk, or e-mailed.