

Millennium 2010 Chromatography Manager

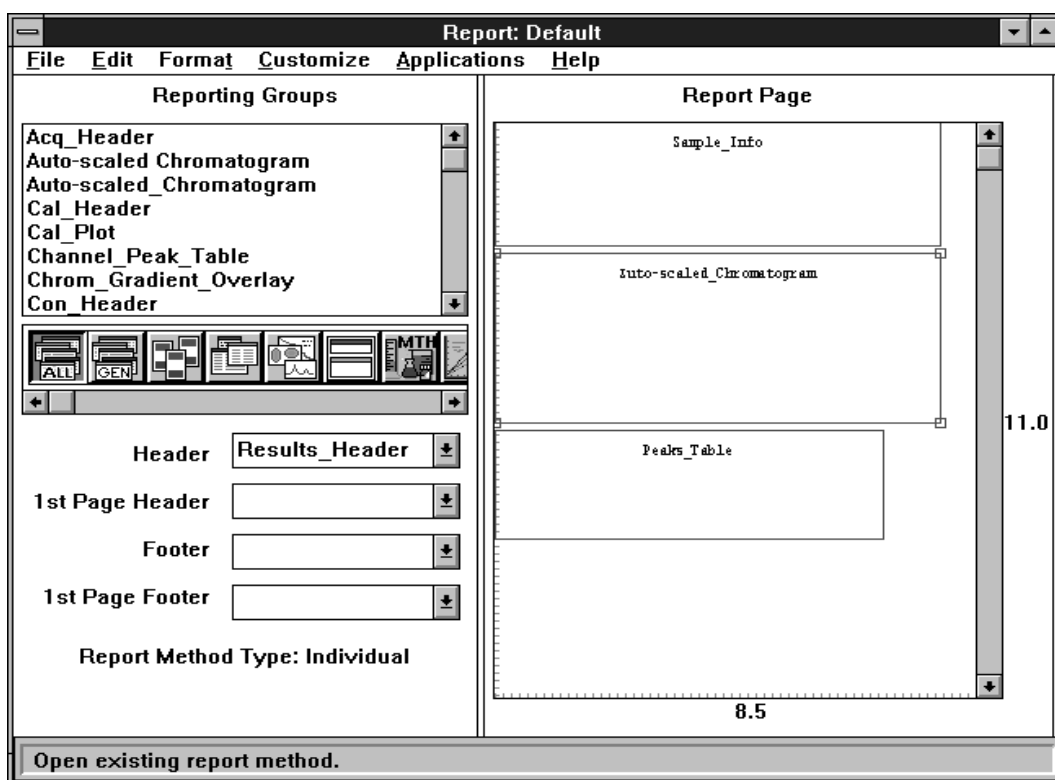
Report Publisher

The Millennium® Chromatography Manager has the ability to publish your chromatographic reports with the "Empty Page" format. Reports can be designed from a blank page, or template reports can be altered, to adjust to whatever requirements by customizing text, graphics, size, orientation and layout.

Reporting Results

From individual reports to summaries of multiple analyses, the Report Publisher provides publication quality hard copy. The empty page format allows the user to customize the report to meet their specific laboratory needs or use the default reporting format. From the report publisher screen (pictured below), one can include custom fields, calculate new results, perform simple statistics or set up a complex table quickly and easily. Once the report has been designed, the data can be viewed with the Preview feature to assure the desired reports were generated before printing hard copy.

The figure below shows the report publisher set up for the default report format. The default report consists of the results_header, sample_info, auto_scaled Chromatogram and peak_table. An example report using the default reporting method is on the next page.



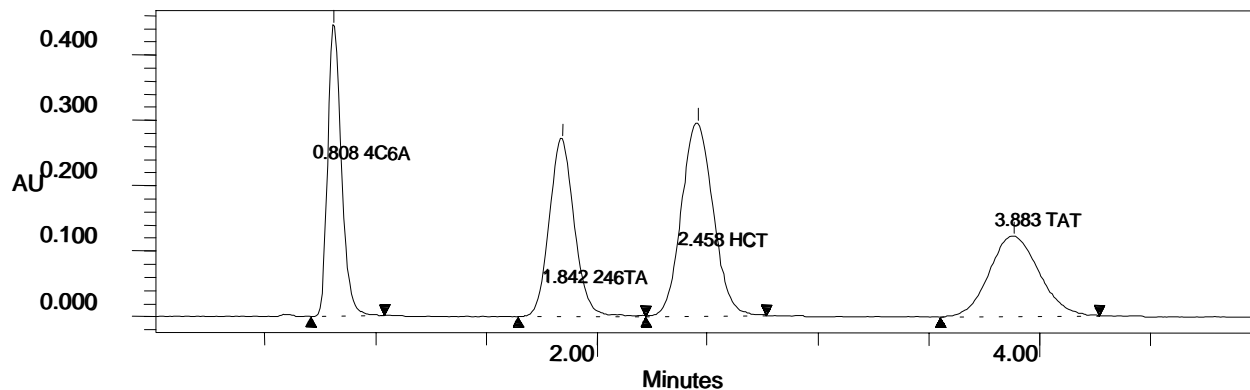
Default Report Format

The Millennium Chromatography Manager Report Manager includes a default report format as shown below. This provides the essential information about a chromatographic separation and can be easily customized with an "empty page" concept to generate a report which includes the information which is essential to any separation.

Millennium Results Report	November 25, 1996	Page: 1 of 1
Report Method: Default		
For Sample: Antihypert	Vial: 1	Injection: 2
Proc Chan: Ch1	Processed: 12/15/94 02:42:45 PM	

Millennium Sample Information

Project Name:	Demo	Sample Type:	Standard
Sample Name:	Antihypert	Volume:	20.00
Vial:	1	Run Time:	5.0 min
Injection:	2	Date Processed:	12/15/94 02:42:45 PM
Channel:	Ch1	Dilution:	1.00000
Date Acquired:	10/26/92 05:39:34 PM		
SampleWeight:	1.00000		
Acq Meth Set:	Antihypert		
Processing Method:	Antihypert		



Peak Results

#	Name	Ret Time (min)	Area (uV*sec)	Height (uV)	Amount	Int Type
1	4C6A	0.808	1919456	444928	10.000	BB
2	246TA	1.842	2132848	271851	20.000	BB
3	HCT	2.458	2912424	294254	30.000	BB
4	TAT	3.883	1887831	122283	40.000	BB