

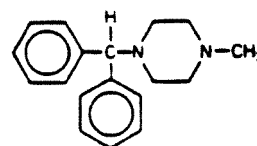
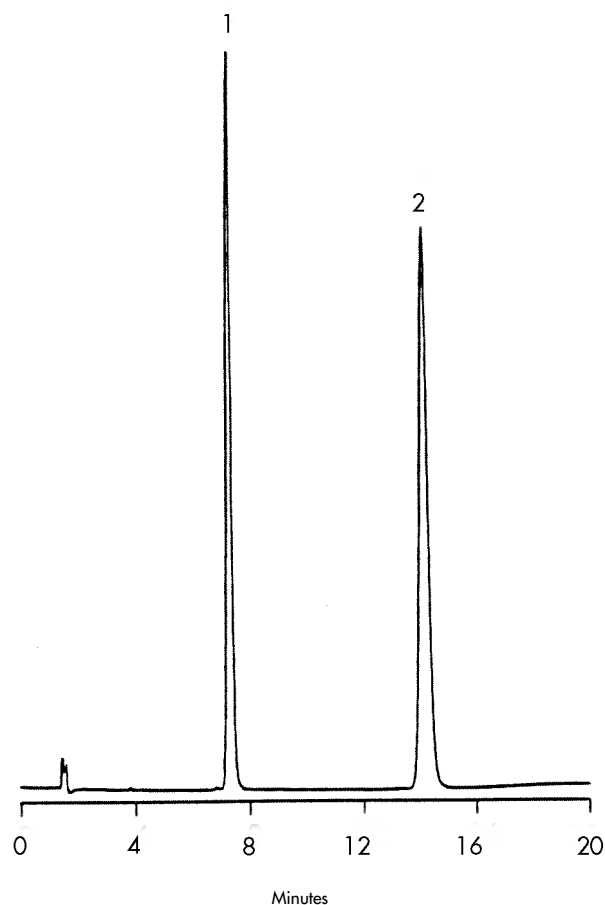
# Cyclizine and Chlorcyclizine

## HPLC Method

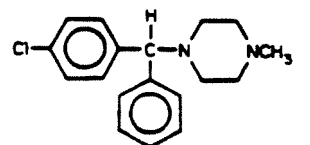
**Column:** Symmetry® C<sub>8</sub>, 3.9 x 150 mm, 5 µm  
**Guard Column:** Sentry™ Guard Column 3.9 x 20 mm, 5 µm  
**Part numbers:** Column - WAT046970, Guard - WAT054250  
**Mobile phase:** 7.4 mM sodium 1-heptanesulfonate in water/acetonitrile 65:35  
**Flow rate:** 1.0 mL/min  
**Injection volume:** 8 µL of 100 µg/mL sample  
**Detection:** UV @ 230 nm

## USP Tailing Factors

1. 1.28
2. 1.28



1. Cyclizine



2. Chlorcyclizine HCL