

Codeine and Its Glucuronide Metabolite in Porcine Plasma

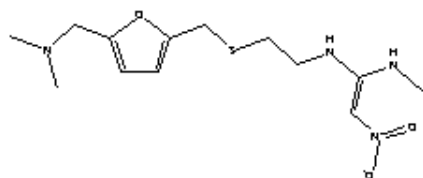


HPLC Method

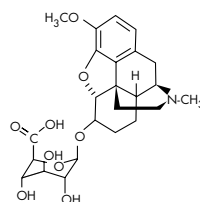
Column: Symmetry® C₁₈, 2.1 x 150 mm, 3.5 µm
Guard Column: Symmetry® C₁₈, 2.1 x 10 mm, 3.5 µm
Part numbers: Column - 186000174, Guard - 186000169
Mobile phase: Methanol/Acetonitrile/0.05% TFA in water 5:5:90
Flow rate: 0.3 mL/min
Injection volume: 80 µL urine extract
Temperature: 30° C
Detection: UV @ 220 nm (0.04 AUFS)

Compounds:

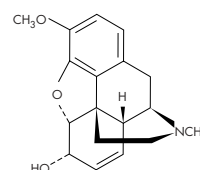
1. Ranitidine (I.S.)
2. Codeine-6-Glucuronide (C-6-G)
3. Codeine



1. Ranitidine



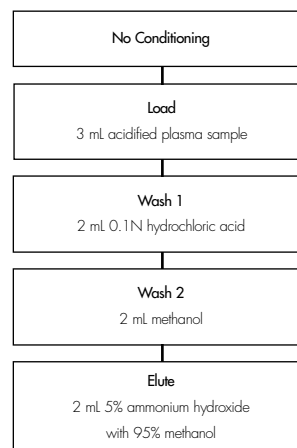
2. Codeine-6-Glucuronide (C-6-G)



3. Codeine

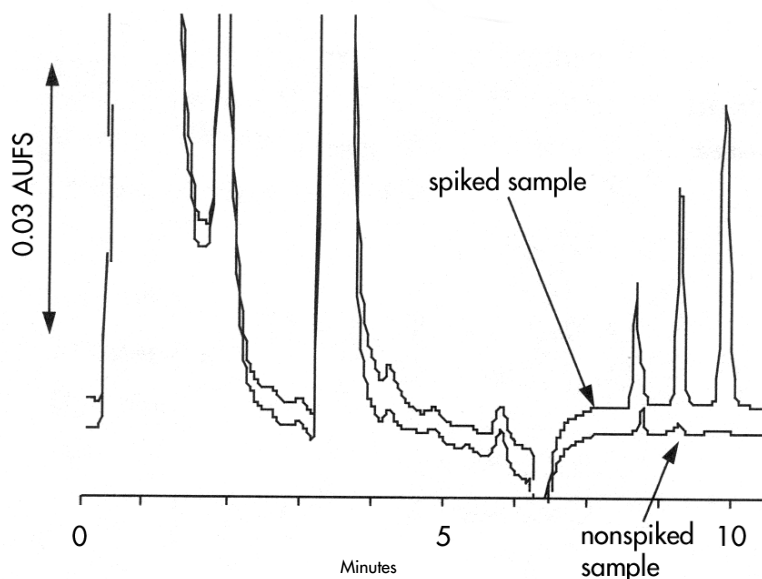
Oasis® MCX Extraction Method

Oasis® MCX Extraction Cartridge, 3 cc/60 mg
 Part Number 186000254



After elution, the extract is diluted 1:3 with water for HPLC analysis

Chromatogram of Plasma Extracts: A) Blank B) Spiked Sample



Spike Level:	% Recovery(n=3) 0.12 µg/mL 0.6 µg/mL	%RSD(n=3)
Codeine	95.4 (5.0)	103.4 (0.9)
Codeine-6-Glucuronide	106.8 (1.9)	04.6 (1.3)