

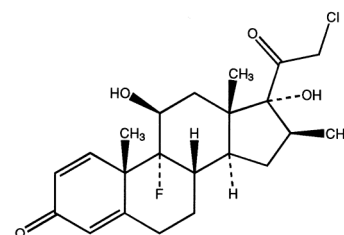
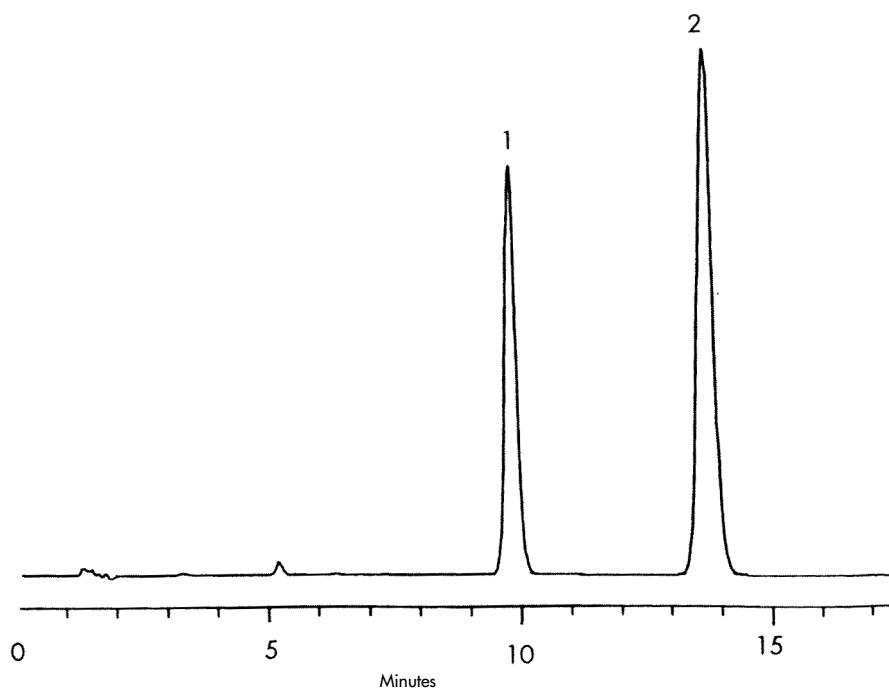
# Clobetasol and Related Compound

## HPLC Method

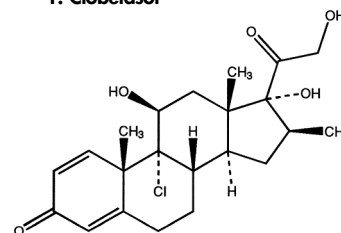
**Column:** SymmetryShield™ RP<sub>18</sub>, 4.6 x 150 mm, 5 µm  
**Part number:** 186000109  
**Mobile phase:** Acetonitrile/water/methanol 48:42:10  
**Flow rate:** 1.0 mL/min  
**Injection volume:** 10 µL  
**Detection:** UV @ 240 nm

## USP Tailing Factors

1. 1.07
2. 1.05



1. Clobetasol



2. Beclomethasone