

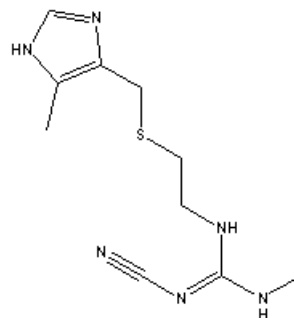
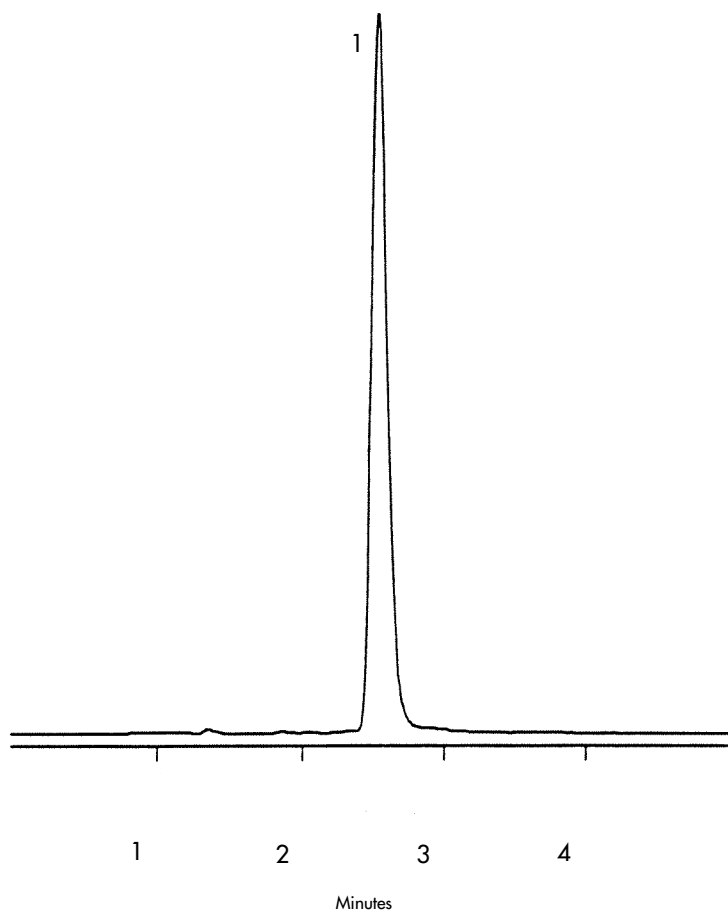
# Cimetidine- (Symmetry® C<sub>18</sub> )

## HPLC Method

**Column:** Symmetry® C<sub>18</sub>, 3.9 x 150 mm, 5 µm  
**Part number:** VAT046980  
**Mobile phase:** 0.03% Phosphoric acid in water/methanol 90:10  
**Flow rate:** 1.0 mL/min  
**Injection volume:** 10 µL injection of 10 µg/mL  
**Detection:** UV @ 220 nm

## USP Tailing Factors

1. 1.2



1. Cimetidine