

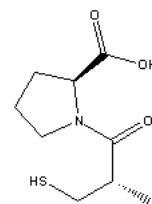
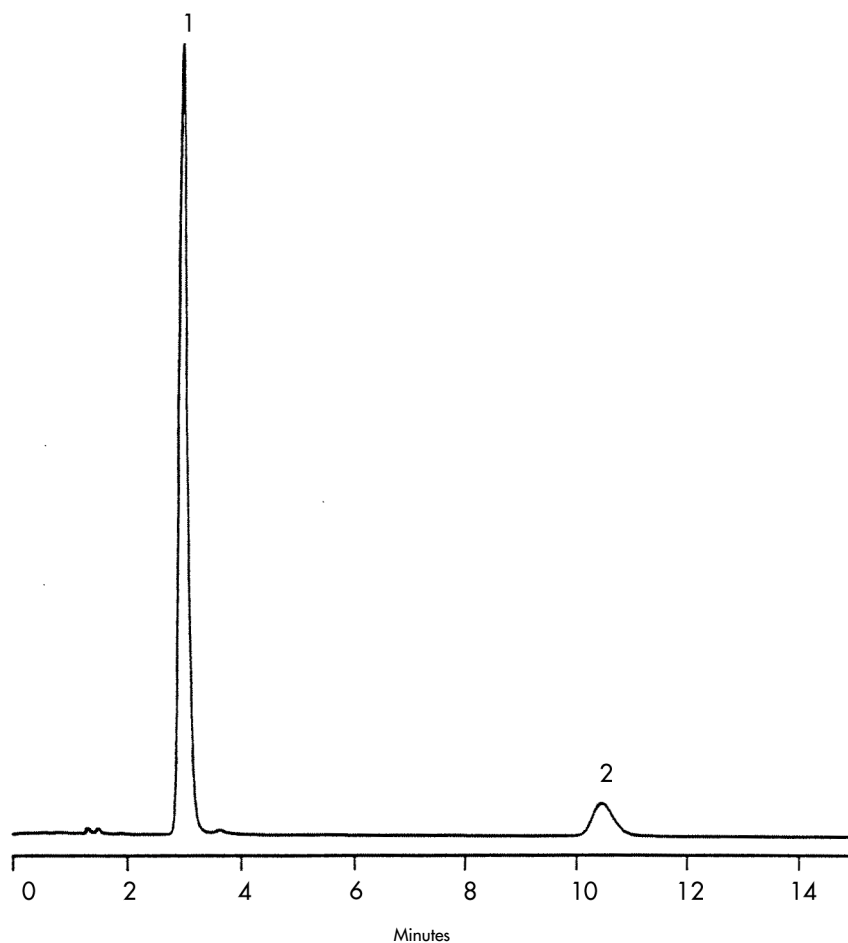
Captopril

HPLC Method

Column: Symmetry® C₁₈, 3.9 x 150 mm, 5 µm
Part number: WAT046980
Mobile phase: 0.1% phosphoric acid in water/methanol 60:40
Flow rate: 1.0 mL/min
Injection volume: 10 µL of 200 µg/mL captopril and 20 µg/mL of captopril disulfide
Temperature: 40° C
Detection: UV @ 220 nm

USP Tailing Factors:

1. 1.0
2. 1.2



1. Captopril