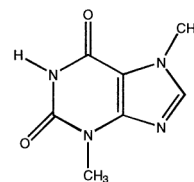


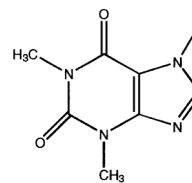
Theophylline and Related Compounds

HPLC Method

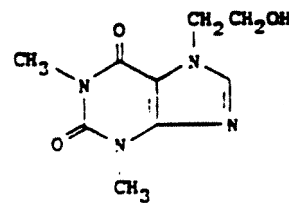
Column: SymmetryShield™ RP₁₈, 3.0 x 150 mm, 5 µm
Part number: 186000692
Mobile phase: 5 mM potassium phosphate, pH 2.0/acetonitrile 95:5
Flow rate: 0.6 mL/min
Injection volume: 5 µL injection of solution containing theobromine (0.22 mg/mL), theophylline (0.26 mg/mL), and 7-(2-hydroxyethyl) theophylline (0.13 mg/mL)
Detection: UV @ 270 nm



1. Theobromine



2. Theophylline



3. 7-(2-hydroxyethyl) Theophylline

