

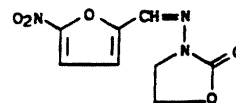
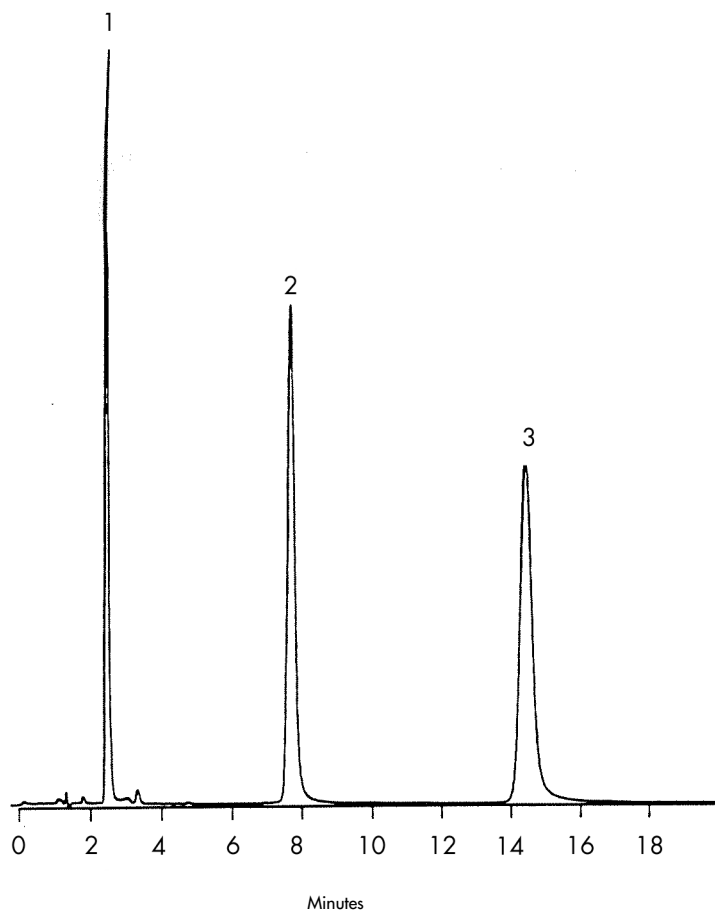
Synthetic Antibiotics

HPLC Method

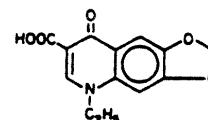
Column: Symmetry® C₁₈, 3.9 x 150 mm, 5 µm
Part number: WAT046980
Mobile phase: 0.1% phosphoric acid in water/methanol 62:38
Flow rate: 1.0 mL/min
Injection volume: 10 µL of mixture with 30 µg/mL furazolidone and oxolinic acid and 100 µg/mL nolidixic acid
Detection: UV @ 254 nm

USP Tailing Factors

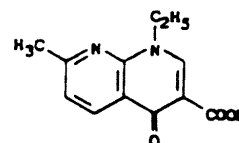
1. 1.2
2. 1.1
3. 1.2



1. Furazolidone



2. Oxolinic Acid



3. Nalidixic Acid