

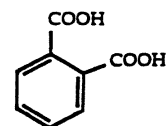
Salicylic Acid and Related Compounds

HPLC Method

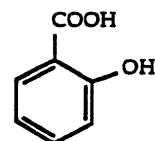
Column: Symmetry® C₁₈, 3.9 x 150 mm, 5 µm
Part number: WAT046980
Mobile phase: 50 mM potassium phosphate pH 3.0/acetonitrile 70:30
Temperature: 40° C
Flow rate: 0.7 mL/min
Injection volume: 6 µL of phthalic acid (0.5 mg/mL), benzoic and salicylic acids (1 mg/mL)
Detection: UV @ 254 nm

USP Tailing Factors

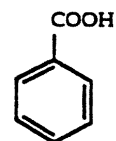
1. 1.7
2. 1.1
3. 1.4



1. Phthalic Acid



2. Salicylic Acid



3. Benzoic Acid

