

©2005 Waters Corporation

Conditions

Column: SunFire™ C₁₈ 4.6 x 150 mm, 5 µm

Part Number: 186002559

Mobile Phase A: 0.1% HCOOH in Water

Mobile Phase B: 0.1% HCOOH in ACN

Flow Rate: 1.4 mL/min

Gradient:	Time (min)	Profile %A	%B
	0.0	80	20
	2.0	80	20
	10.0	50	50

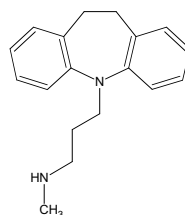
Injection Volume: 10 µL

Sample Concentration: 14 mg/mL each, in DMSO

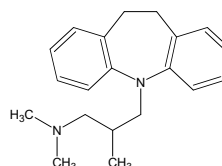
Temperature: Ambient

Detection: UV @ 254 nm

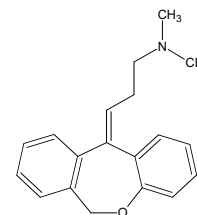
Instrument: AutoPurification® System



Desipramine

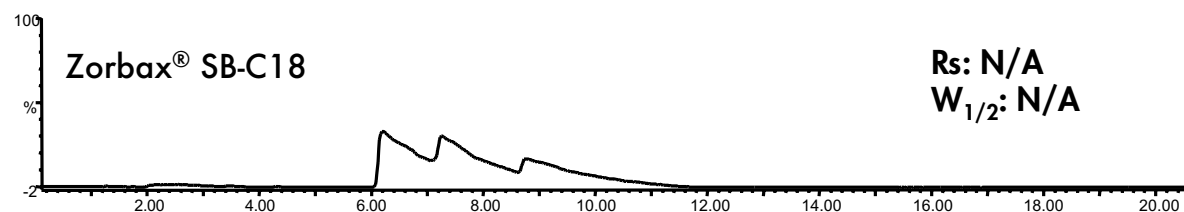
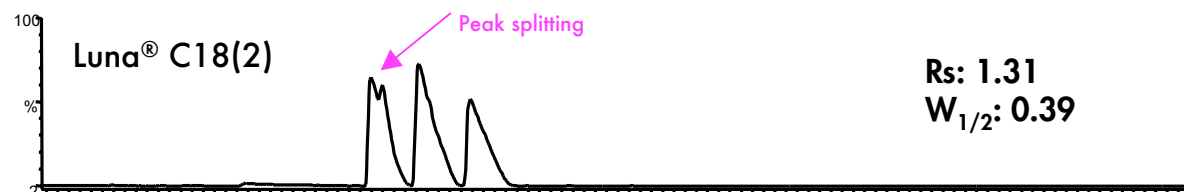
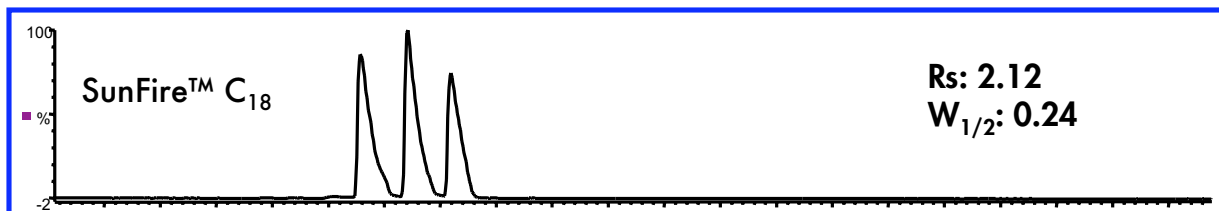


Trimipramine



Doxepin

High mass loading
comparisons with other
leading HPLC
Column brands



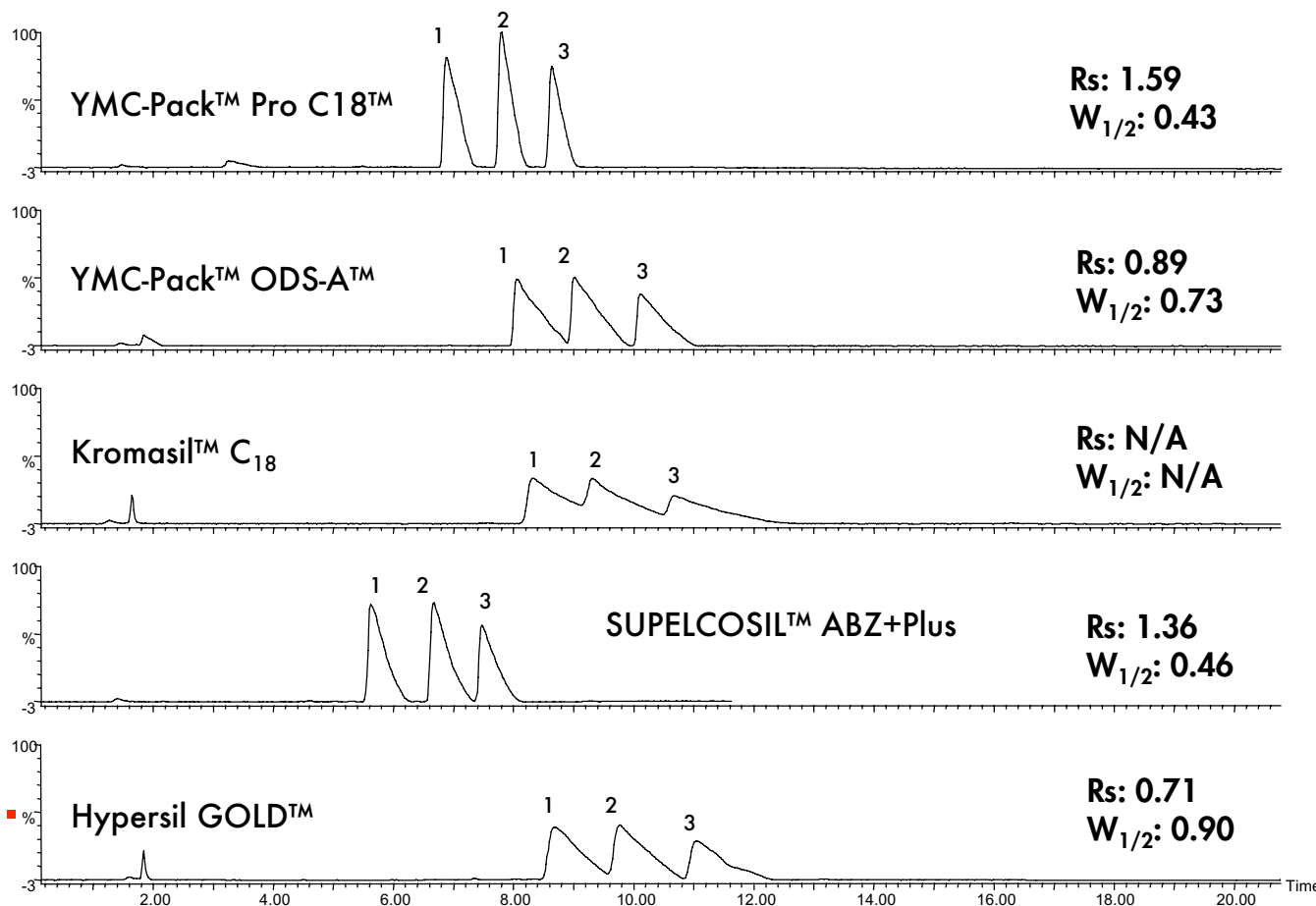
Compounds

1. Doxepin
2. Desipramine
3. Trimipramine

*: Rs value is calculated based on the separation of the 1st and 2nd peaks.

W_{1/2} value is calculated based on the half width of the 3rd peak.

©2005 Waters Corporation



Compounds

1. Doxepin
2. Desipramine
3. Trimipramine

*: Rs value is calculated based on the separation of the 1st and 2nd peaks.

W_{1/2} value is calculated based on the half width of the 3rd peak.