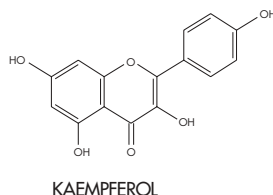


FLAVONOIDS IN GINKGO, COMMERCIAL PRODUCTS AND WHOLE LEAF

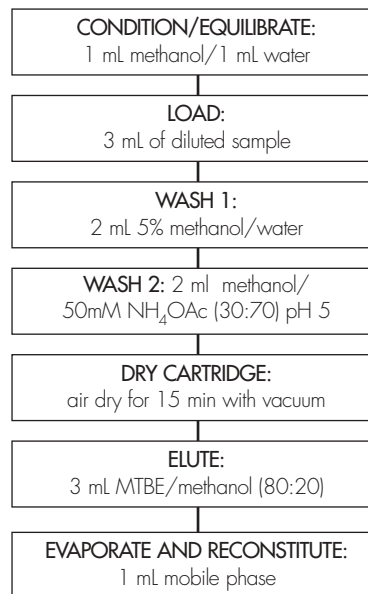
HPLC METHOD

COLUMN: Symmetry® C₁₈, 4.6 x 250 mm, 5 µm
PART NUMBER: WAT054275
MOBILE PHASE: 0.5% Phosphoric acid/Methanol 50:50
FLOW RATE: 1.5 mL/min
INJECTION VOLUME: 10 µL
TEMPERATURE: 25 °C
DETECTION: UV @ 270nm (0.02 AUFS)



OASIS® HLB METHOD FOR FLAVONOIDS IN GINKGO

Conditions for Oasis® HLB Cartridge, 3 cc/60 mg
 Part Number WAT094226



SAMPLE PRE-PREPARATION

1 g sample is refluxed in 50 mL of ethanol:
 3M HCl (70:30) for 2.5 hr
 The cooled sample is adjusted to exactly 100 mL
 0.3 mL of the ethanolic extract is diluted 1:10 with water

- Recovery, measured with certified standards at 100 ppm in reagent water, was 82 % for quercetin and > 90 % for the other compounds
- All analyses gave results within ± 40 % of the expected values with the exception of the capsule (+ 60%)
- The selective SPE extraction and cleanup procedure provided a convenient analysis of ginkgo flavonoids in a complex matrix (Herbal One with 16 herbal ingredients)



Ginkgo extract before SPE cleanup



Ginkgo extract after SPE cleanup using Oasis® HLB

COMPOUNDS	% RECOVERY
1. quercetin	82%
2. kaempferol	> 90%
3. isorhamnetin	> 90%
total: 11 mg / tablet	

