

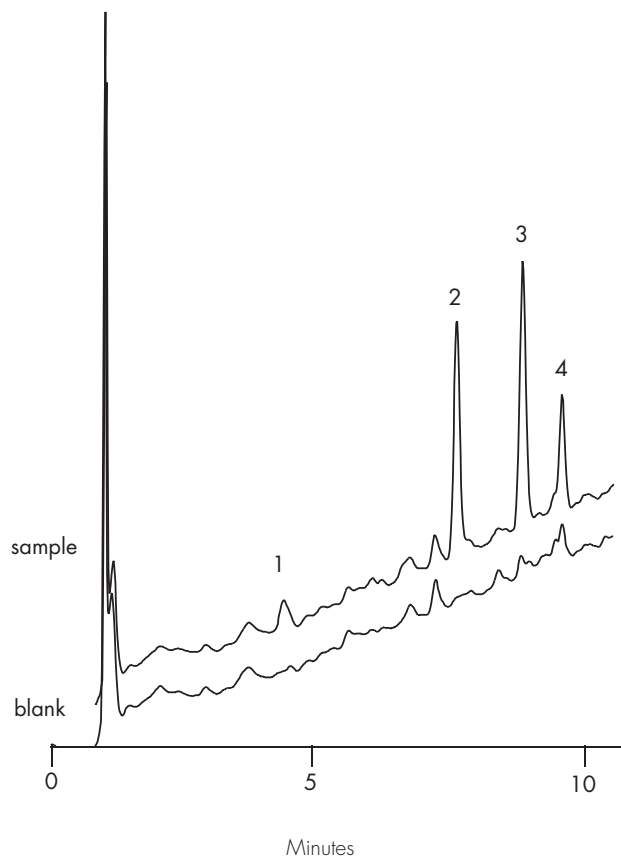
ENDOCRINE DISRUPTORS FOR POLAR COMPOUNDS IN SOIL

HPLC METHOD

COLUMN: Symmetry® C₁₈, 3.9 x 150 mm, 5 µm
PART NUMBER: WAT046970
MOBILE PHASE A: 10 mM phosphate pH 6.8
MOBILE PHASE B: Methanol
GRADIENT:

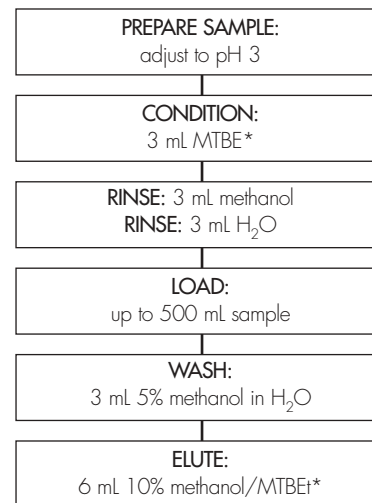
Time (min)	%A	%B
0	60	40
20	0	100

FLOW RATE: 1.0 mL/min
INJECTION VOLUME: 100 µL
SAMPLE: 10 g potting soil extracted with 25 mL acetonitrile; then SPE on Oasis® HLB
DETECTION: PDA (225 nm extracted, 0.04 AUFS)



OASIS® SPE METHOD FOR ENDOCRINE DISRUPTORS

Conditions for Oasis® HLB Cartridge, 6 cc, 200 mg
 Part Number WAT106202



For GC analysis, dry
 extract over Na₂SO₄,
 then adjust to 1 mL

For LC analysis, exchange
 to acetonitrile, then
 adjust to 1 mL

* methyl tbutyl ether
 diethyl ether can be used as an alternative to MTBE

COMPOUNDS	% RECOVERY ± % RSD
1. benomyl	62 ± 6
2. carbaryl	91 ± 4
3. atrazine	84 ± 5
4. bisphenol A	78 ± 6

Soil samples (5 g) were spiked with the appropriate compounds and extracted with 25 mL of acetonitrile (30 minutes on shaker). A 5 mL aliquot of the acetonitrile extract was diluted to 100 mL with reagent water (MilliQ) and then processed by SPE.

50 ppb spike level