

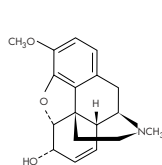
CODEINE AND ITS GLUCURONIDE METABOLITE IN PLASMA

HPLC METHOD

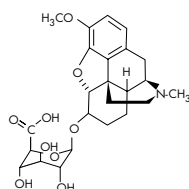
COLUMN: Symmetry® C₁₈, 2.1 x 150 mm, 3.5 µm
GUARD COLUMN: Symmetry® C₁₈, 2.1 x 10 mm, 3.5 µm
PART NUMBERS: Column - 186000174, Guard - 186000169
MOBILE PHASE: Methanol/Acetonitrile/0.05% TFA in water 5:5:90
FLOW RATE: 0.3 mL/min
INJECTION VOLUME: 80 µL urine extract
TEMPERATURE: 30° C
DETECTION: UV @ 220 nm (0.04 AUFS)

COMPOUNDS:

1. Ranitidine (I.S.)
2. Codeine-6-Glucuronide (C-6-G)
3. Codeine



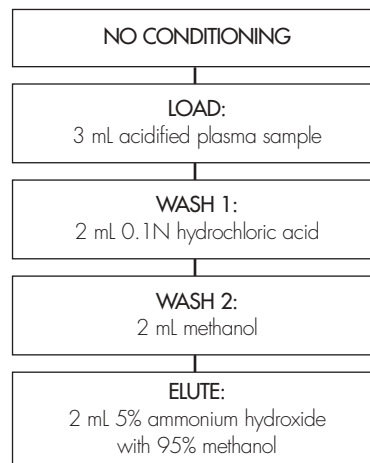
CODEINE



CODEINE-6-GLUCURONIDE

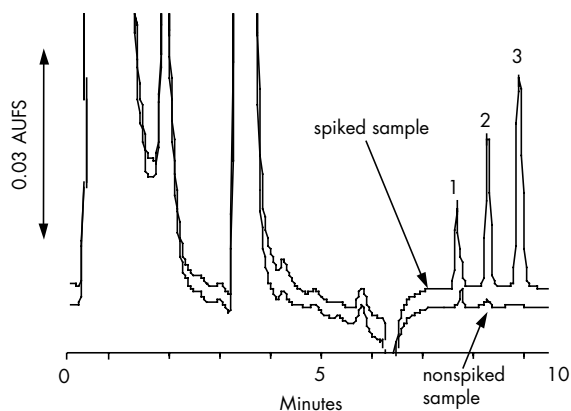
OASIS® MCX EXTRACTION METHOD

Oasis® MCX Extraction Cartridge, 3 cc/60 mg
 Part Number 186000254



After elution, the extract is diluted 1:3 with water for HPLC analysis

CHROMATOGRAM OF PLASMA EXTRACTS: A) BLANK B) SPIKED SAMPLE



SPIKE LEVEL:	% Recovery (n=3) 0.12 µg/mL	% RSD (n=3) 0.6 µg/mL
Codeine	95.4 (5.0)	103.4 (0.9)
Codeine-6-Glucuronide	106.8 (1.9)	104.6 (1.3)