

AMITROLE IN RIVER WATER

LC CONDITIONS

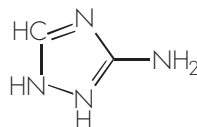
COLUMN: Waters Spherisorb® Silica, 2 x 100 mm, 3 µm
PART NUMBER: PSS832022
MOBILE PHASE A: Acetonitrile
MOBILE PHASE B: 0.05% phosphoric acid
GRADIENT:

Time (min)	%A	%B
0	100	0
5	0	100

FLOW RATE: 200 µL/min
INSTRUMENT: Alliance® 2690 Separations Module

MS CONDITIONS

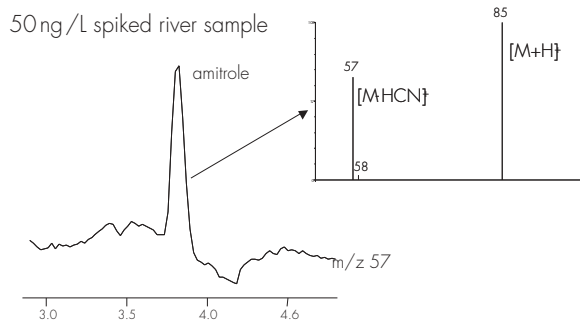
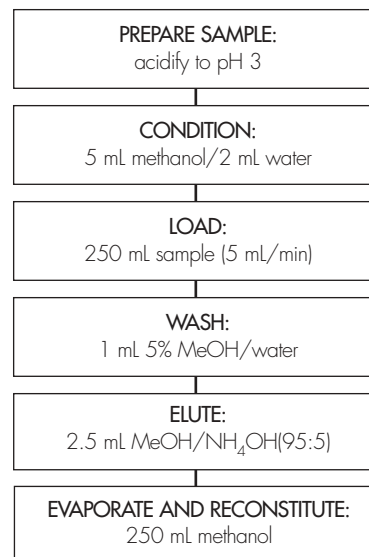
INSTRUMENT: Micromass ZQ™
ION SOURCE: Electrospray positive
MODE: Multiple selected-ion recording
SOURCE TEMP: 150 °C
DESOLVATION TEMP: 450 °C
DESOLVATION GAS: 500 L/hr
CONE: 50 V



AMITROLE

OASIS® MCX EXTRACTION METHOD

Oasis® MCX Extraction Cartridge, 6 cc/150 mg (LP)
 Part Number: 186000255



SIR Chromatograms

¹ Calculated against standard prepared in matrix. Matrix suppression was approximately 10%.

AMITROLE (ESI+) RESULTS

AMITROLE	RECOVERY	¹ (n=6)
50ng/L	95%	(9.4% RSD)
100ng/L	85%	(7.6% RSD)
400ng/L	84%	(5.0% RSD)