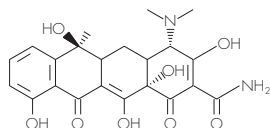


TETRACYCLINES IN MILK (ANTIBACTERIALS)

HPLC METHOD

COLUMN: Nova-Pak® C₈, 3.9 x 150 mm, 4 µm
PART NUMBER: WAT086344
MOBILE PHASE: ACN, Methanol, 50 mM Oxalic acid in water;
 13:13:74
FLOW RATE: 0.8 mL/min
INJECTION VOLUME: 60 µL
DETECTION: UV @ 365 nm



TETRACYCLINE

The milk sample (15 mL) is diluted with 25 mL of McIlvaine (mixed citrate/phosphate, pH 4.1) buffer with added EDTA. The diluted sample is centrifuged at 8000 x g for 10 minutes at 5° C. Any floating lipid layer is removed and the remaining supernatant is processed using Oasis® HLB solid-phase extraction cartridges.

For details of the buffer preparation procedure see J.AOAC Int., **79** (2), p 405 (1996).

COMPOUNDS

		% RECOVERY	
		TAP WATER	APPLE
		Spike Level	Spike Level
		25 µg/L	50 µg/L
		4 replicates	4 replicates
1.	Oxytetracycline	70.7 (3.5)	67.7 (5.8)
2.	Tetracycline	73.7 (7.3)	68.5 (5.1)
3.	Chlortetracycline	76.7 (2.9)	67.3 (1.8)

OASIS® HLB EXTRACTION METHOD

Conditions for Oasis® HLB Cartridge, 3 cc, 60 mg
 Part Number WAT094226

