

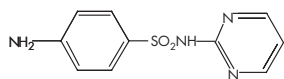
## SULFA DRUGS IN SERUM (ANTIBACTERIAL)

### HPLC METHOD

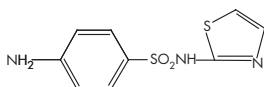
**COLUMN:** Symmetry® C<sub>18</sub>, 3.9 x 150 mm, 5 µm  
**PART NUMBER:** WAT046980  
**MOBILE PHASE:** 1% glacial acetic acid and 4% methanol in water  
**FLOW RATE:** 1.0 mL/min  
**INJECTION VOLUME:** 10 µL of reconstituted porcine serum extract  
**TEMPERATURE:** 25 °C  
**DETECTION:** UV @ 254 nm

#### COMPOUNDS:

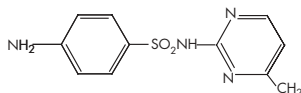
1. Sulfadiazine
2. Sulfathiazole (I.S.)
3. Sulfamerazine



SULFADIAZINE



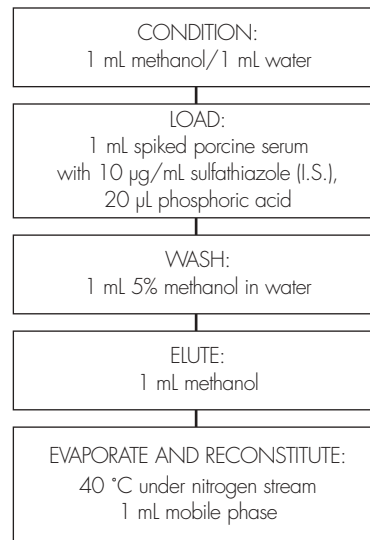
SULFATHIAZOLE (I.S.)



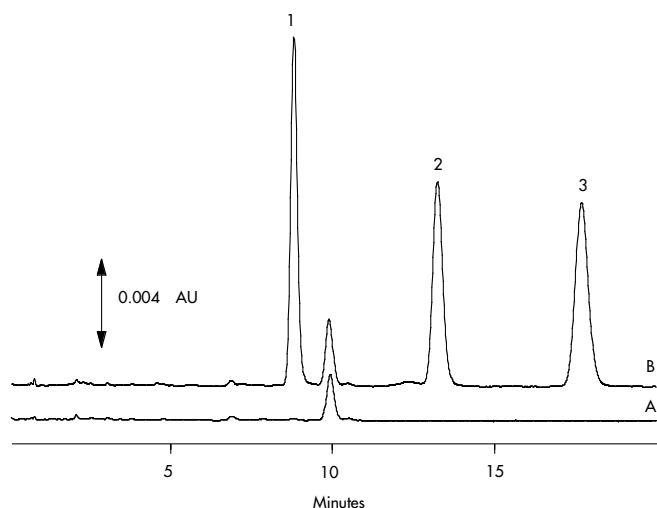
SULFAMERAZINE

### OASIS® HLB EXTRACTION METHOD

Oasis® HLB 1 cc/30 mg Extraction Cartridge  
 Part Number WAT094225



CHROMATOGRAM OF SERUM EXTRACTS: A) BLANK B) SPIKED SAMPLE



COMPOUND	Concentration µg/mL	% Recovery	% RSD (n=6)
Sulfadiazine	2.00	98.4%	2.7%
	10.0	96.9%	0.65%
Sulfamerazine	2.00	93.5%	1.9%
	10.0	96.4%	0.74%