

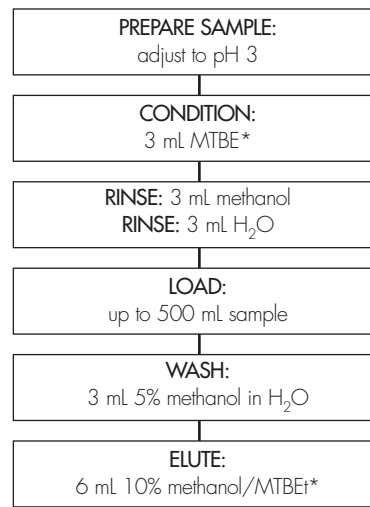
PHTHALATES IN TAP WATER BY LC/UV (ENDOCRINE DISRUPTORS)

HPLC METHOD

COLUMN: SymmetryShield™ RP₈, 3.9 x 150mm, 5µm
MOBILE PHASE A: Water
MOBILE PHASE B: Acetonitrile
GRADIENT: 50% B linear to 100% B in 10 min
FLOW RATE: 0.8 mL/min
INJECTION VOLUME: 20 µL
SAMPLE: 150 mL of surface water
 spiked @ 4 ng/L
DETECTION: UV @ 196nm (0.03 AUFS)

OASIS® SPE METHOD FOR ENDOCRINE DISRUPTORS

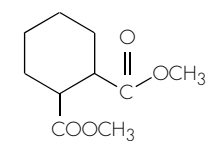
Conditions for Oasis® HLB Cartridge, 6 cc/200 mg
 Part Number WAT106202
 Part Number: WAT200655



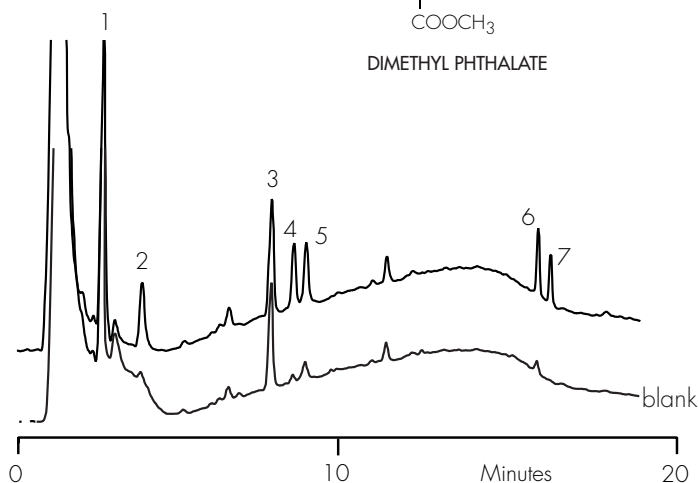
For GC analysis, dry
 extract over Na₂SO₄,
 then adjust to 1 mL

For LC analysis, exchange
 to acetonitrile, then
 adjust to 1 mL

* methyl tbutyl ether
 diethyl ether can be used as an alternative to MTBE



DIMETHYL PHTHALATE



RESULTS

Results are given as % recovery with % RSD in parenthesis

COMPOUNDS	4 µg/L	16 µg/L
	5 replicates	5 replicates
1. Dimethyl phthalate	n.d.	87.2 (3.2)
2. Diethyl phthalate	97.4 (3.8)	92.3 (2.1)
3. Benzylbutyl phthalate	88.7 (14)	82.2 (1.6)
4. Dibutyl phthalate	88.0 (17)	87.7 (2.2)
5. Bis(ethylhexyl)phthalate	66.9 (22)**	72.1 (5.5)
6. Dioctyl phthalate	64.9 (22)	70.6 (5.6)

n.d. blank value greater than 50 % of spike level

** blank value greater than 20 % of spike level