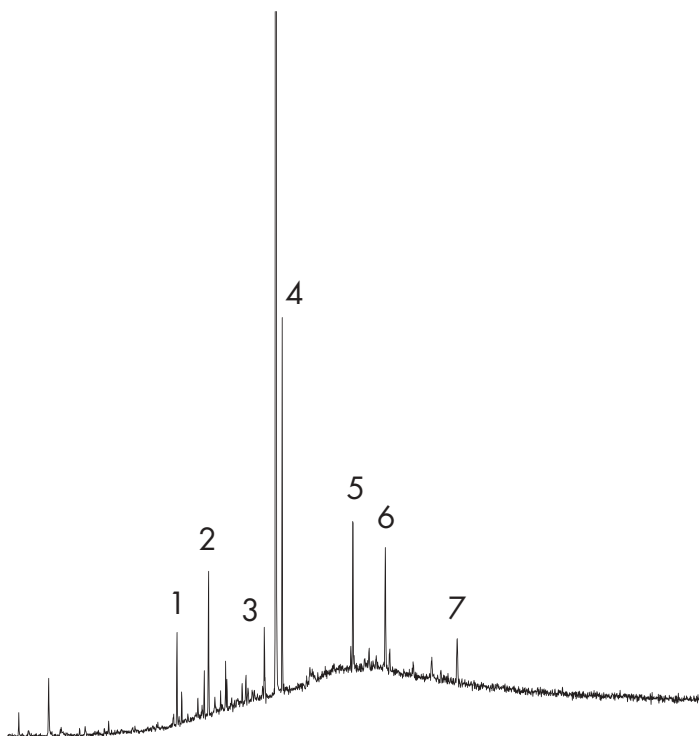


## PHTHALATES AND NONYLPHENOL FROM RIVER WATER BY GC/MS (ENDOCRINE DISRUPTORS)

COMPOUNDS	% RECOVERY
1. Dimethyl phthalate	130 (15)
2. Diethyl phthalate	86 (12)
3. n-nonylphenol	90 (11)
4. Dibutyl phthalate	110 (11)
5. Benzylbutyl phthalate	110 (8)
6. Bis(ethylhexyl)phthalate	60 (8)
7. Dioctyl phthalate	<50

200 ng/L Spike Level, n = 4

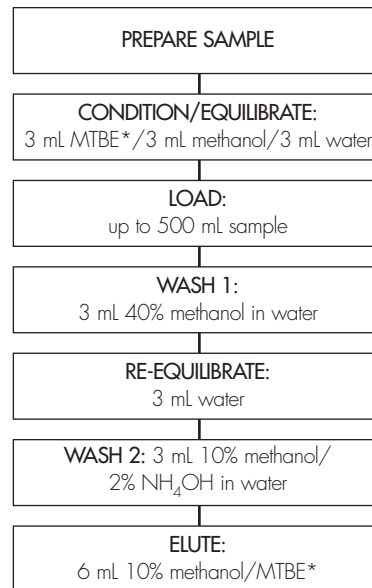


GC/MS:  
HP5890 II with 5971 MSD

Column:  
30m x 0.25 mm RTX5ms

### OPTIMIZED OASIS® HLB METHOD

Oasis® HLB Glass Cartridge 5 cc/200 mg  
Part Number 186000683



\* methyl tbutyl ether  
diethyl ether can be used as an alternative to MTBE