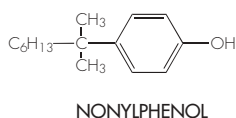


NONYLPHENOL IN TAP WATER (ENDOCRINE DISRUPTORS)

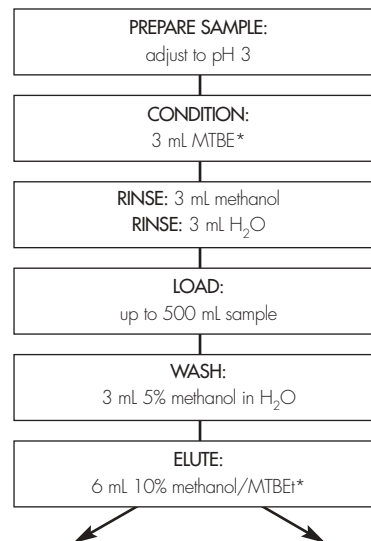
GC METHOD

COLUMN: J&W DB-5 capillary, 30 meters, 0.25 mm ID,
0.25 µm film thickness
CARRIER GAS: Helium @ 30 cm/sec
TEMP. PROGRAM: 50° C initial, 30° C/min to 120° C
then 8°/min to 280°
INJECTION VOLUME: 2 µL
DETECTION: NPD



OASIS® SPE METHOD FOR ENDOCRINE DISRUPTORS

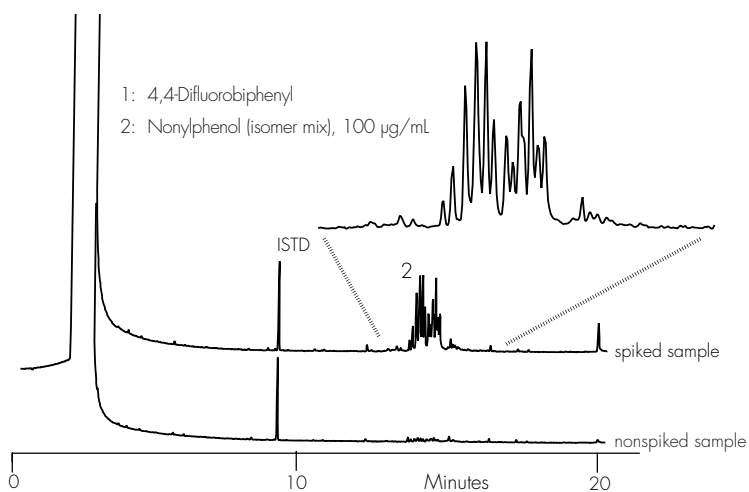
Conditions for Oasis® HLB Cartridge, 6 cc/200 mg
Part Number WAT106202



For GC analysis, dry
extract over Na₂SO₄,
then adjust to 1 mL

For LC analysis, exchange
to acetonitrile, then
adjust to 1 mL

* methyl tbutyl ether
diethyl ether can be used as an alternative to MTBE



GC RESULTS

Spike level: 100 µg/L
n = 5
Recovery = 84.3%
RSD = 9.0%