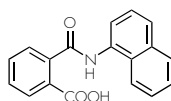


NAPTALAM IN CUCUMBER (LC/MS)

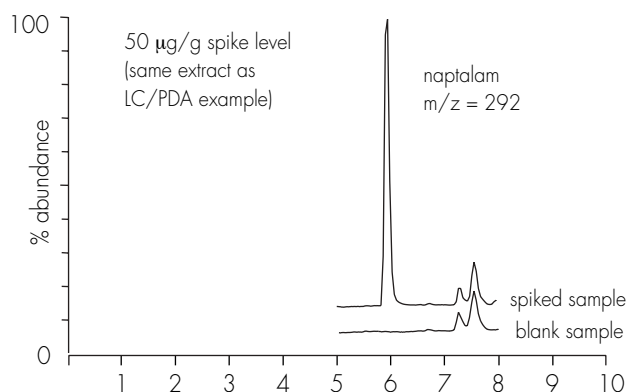
LC/MS CONDITIONS

COLUMN: XTerra® MS C₁₈, 2.1 x 100 mm
MOBILE PHASE: 25% acetonitrile/75% 10mM ammonium acetate (pH 5.5) to 90% acetonitrile in 6 minutes
FLOW RATE: 200 µL/min
INJECTION VOLUME: 20 µL
INSTRUMENT: Waters Alliance® Separations Module

INSTRUMENT: Waters/Micromass ZMD™
INTERFACE: Positive Electrospray (ESI⁺)
 Multiple Selected-Ion Recording (SIR)

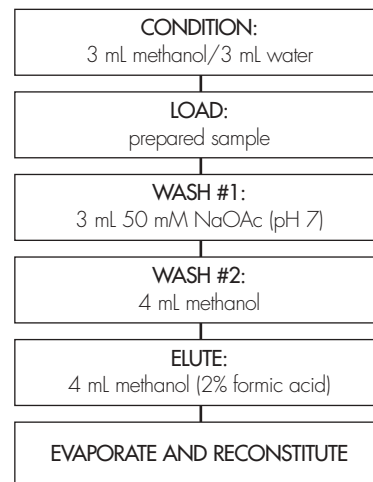


NAPTALAM



OASIS® MAX EXTRACTION METHOD

Conditions for Oasis® MAX Cartridge, 6 cc/500 mg
 Part Number 186000865



SAMPLE PREPARATION

- prepare 8 gm sample (homogenize)
- extract with 30mL acetonitrile (shake 30 min)
- centrifuge (10 min@ 8000 x g)
- transfer supernatant to reservoir
- wash pellet with 20mL water
- transfer wash to reservoir (combine with supernatant)
- perform SPE

RESULTS* (% recovery ± % RSD, n=4)

10 ppb	50 ppb
73 (6)	76 (8)

SIR Group	Time Mins.	Compound	Mass	Cone Voltage	Dwell Time
1	5 - 8	Naptalam	144,292,293	17V	0.8 secs.

* recovery measured against standards prepared in cucumber matrix