

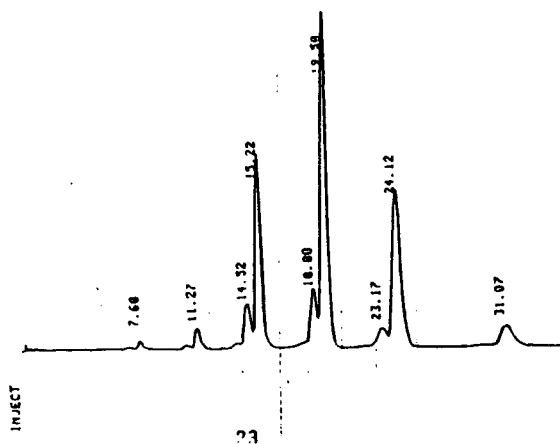
Waters

Lab Highlights

Volume 2, No. 2
RESOLVE™ COLUMNS
82.600.002.002.039
(.037)

RESOLVE™ 15 CM. STEEL COLUMNS PROVIDE HIGH RESOLUTION WITH MINIMUM SOLVENT CONSUMPTION

Conditions for a customer sample were optimized on the RCM-100[®] using a
5 μ Radial-PAK™ C₁₈ Cartridge.

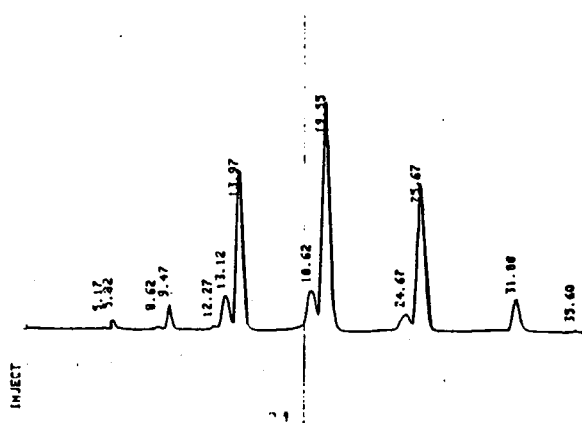


Column: 5 μ Radial-PAK™ C₁₈ Cartridge
(RCM-100[®])
Gradient: 10% H₂O/90% acetonitrile to
100% Acetonitrile (20 min., linear)

FLOW RATE: 8 ML/MIN

Detector: WATERS™ M440, 254 nm

Comparable resolution and run time was achieved using a 5 μ RESOLVE™ 15 cm
Steel Column with a 4 ml/min flow rate.



Column: 5 μ RESOLVE™ 15 cm Steel Column
Gradient: 10% H₂O/90% Acetonitrile to
100% Acetonitrile (30 min., linear)

FLOW RATE: 4 ML/MIN

Detector: WATERS™ M440, 254 nm

The new RESOLVE™ Steel Column is able to match the resolution and run time
of the Radial-PAK™ Cartridge with solvent consumption cut in half.