

**Technical Data Ref SPH/9*****Separation of Catecholamines***

The addition of an ion-pair reagent gives improved peak shapes and the increased retention of the more polar components. When combined with electrochemical detection the method is sensitive, specific and reproducible.

Precise control of pH is essential for reproducible retention data.

**Column:** Spherisorb S5 ODS2 25cm x 4.6mm  
Catalogue Number: 831915

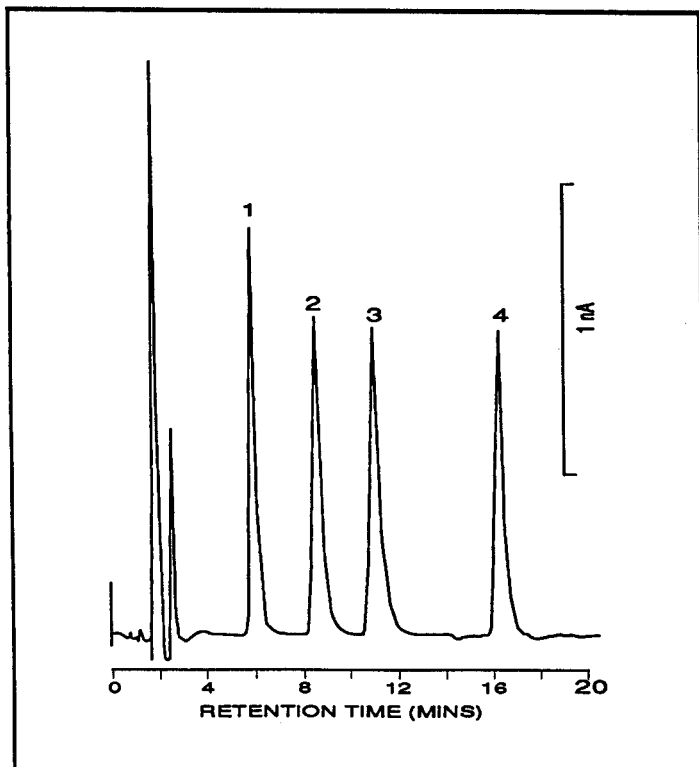
**Flow:** 1.4ml/min

**Detn:** EC

**Eluent:** 85mM Citrate Buffer 5% MeOH pH  
adjusted 4.05 2mM Octanesulphonic  
Acid

**Sample:** Catecholamines and Internal Standard

**Injection:** 10 $\mu$ l

***Separation of 3 Catecholamines and Internal Standard*****Peak Identification**

1. Norepinethrine
2. Epinethrine
3. Dihydroxybenzlamine  
(internal standard)
4. Dopamine