

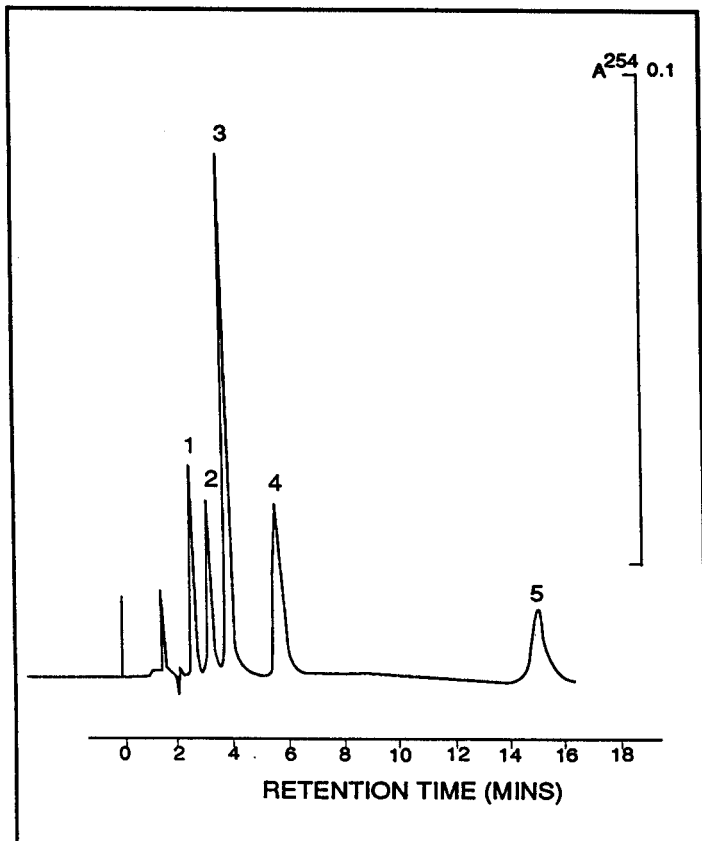
Separation of Isomeric Aminophenols and Organic Amines

The manufacture of isomeric aromatic amines requires the monitoring of the final synthetic product for ortho- and para- isomers together with the reaction precursors.

The use of a phenyl bonded phase, when combined with a chelating mobile phase, improves the peak shape of the early eluting components.

Column: Spherisorb S5 Phenyl 15cm x 4.6mm
Catalogue Number: 830813
Flow: 1.0ml/min
Detn: 254nm
Eluent: 97.5% 0.01M Potassium dihydrogen Phosphate, 2.5% Acetonitrile
+ 6g/dm³ EDTA (potassium salt)
Sample: Synthetic mixture (0.4mg/ml)
Injection: 20µl

Separation of Isomeric forms and reaction precursors



Peak Identification

1. p-aminophenol
2. o-aminophenol
3. acetyl-aminophenol
4. 4,4' Diaminophenylether
5. o-toluidine