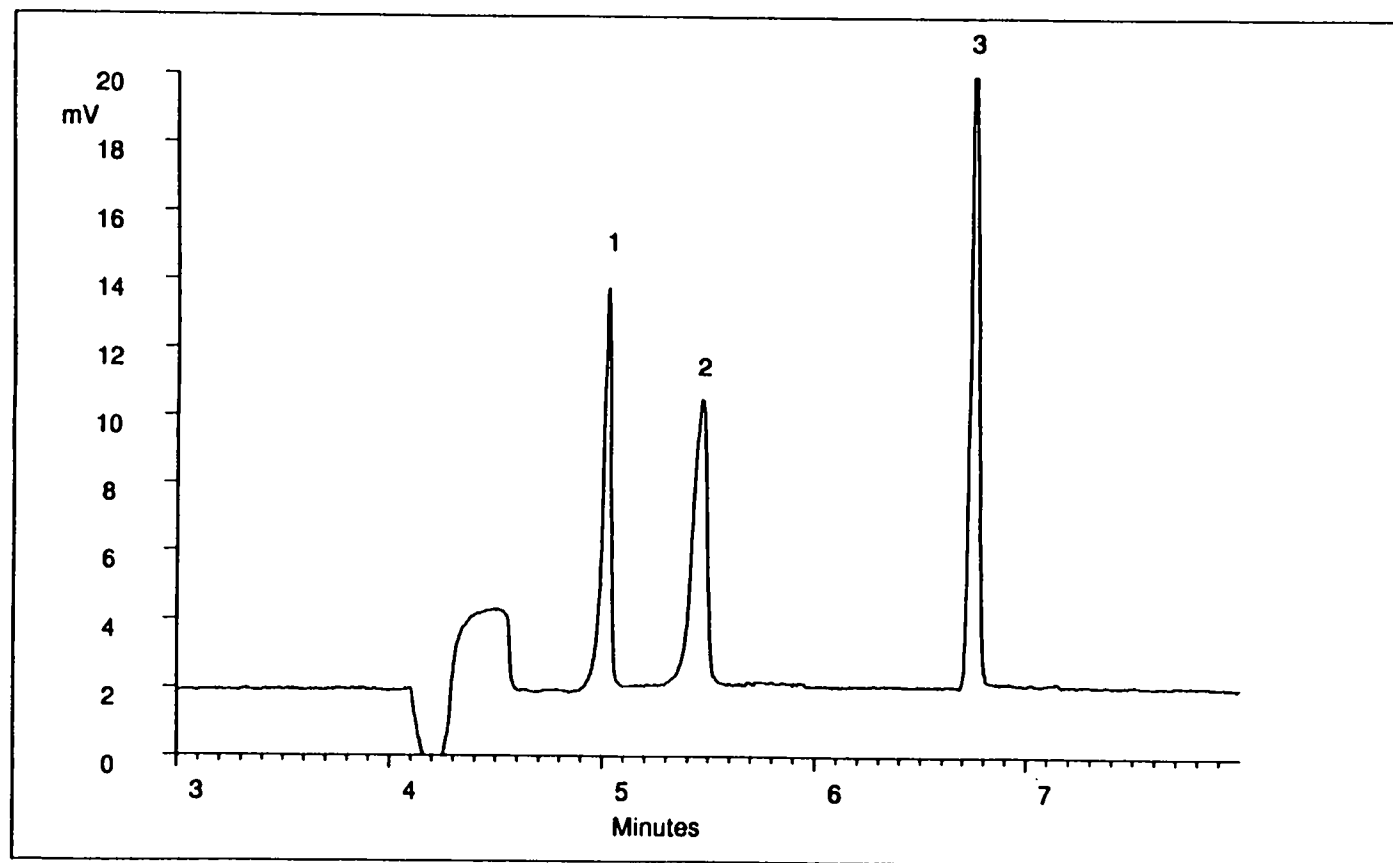


CE Separation of Caffeine and Related Compounds



This separation illustrates the selectivity that is possible for neutral compounds using the MECC mode.

Conditions:

Mode: MECC

Capillary: AccuSep 75 micron
by 60 cm

Buffer: 20mM phosphate/
borate, pH 9.1

Additive: 50 mM SDS

Voltage: 18KV

Detection: UV @ 214 nm

Injection: 15 second Hydrostatic

Sample:

- 1) Theobromine, 50 ppm
- 2) Caffeine, 50 ppm
- 3) Theophylline, 50 ppm

Objective:

Separation of neutral compounds by MECC.

Details:

This separation illustrates the selectivity that is possible for neutral compounds using the MECC mode.

System:

Waters Quanta 4000 CE System
Waters 845 Data System

References:
