

Quantification of Exenatide Using Xevo TQD

Joanne Mather, Erin Chambers, Robert Plumb, and Debadeep Bhattacharya
Waters Corporation, Milford, MA, USA

APPLICATION BENEFITS

Bioanalysis of biotherapeutics has attained increased interest in the bioanalysis community in recent years. As required for all drug candidates, determination and quantification of peptide therapeutics should be performed at low concentrations while addressing all regulatory concerns, ensuring reproducibility, and maintaining method robustness with high throughput value. In addition, it is advisable for these studies to be conducted with minimal financial and other resource investment.

This application note showcases the capabilities of the Xevo® TQD Mass Spectrometer, ACQUITY UPLC® H-Class System, sample preparation, and column chemistries, to achieve a sensitive LC/MS/MS method for the detection and quantification of exenatide in plasma.

WATERS SOLUTIONS

Oasis® MAX micro-elution plates

ACQUITY UPLC H-Class System

ACQUITY UPLC BEH300 C₁₈ Column

Xevo TQD Mass Spectrometer

KEY WORDS

Exenatide, sensitivity, robust,
high throughput, diabetes

INTRODUCTION

The use of peptides and proteins as therapeutic agents has increased significantly in recent years. The bulk of the drug pipeline in most major pharmaceutical companies is now comprised of peptides and proteins. With increased focus on biotherapeutics, the use of LC/MS for the quantitative analysis of proteins and peptides has gained substantial interest due to its accuracy, dynamic range capability, and speed of method development.

Exenatide, shown in Figure 1, is a large therapeutic peptide that is a synthetic version of Exendin-4, a hormone found in the saliva of the Gila monster. It is a 39-amino-acid peptide with a molecular weight of 4186.6 Da. Exenatide has been approved for the treatment of diabetes mellitus type 2 as an adjunctive therapy marketed as Byetta (Amylin Pharmaceuticals). Exenatide enhances glucose-dependent insulin secretion by the pancreatic beta-cell; thereby, regulating glucose metabolism and insulin secretion. It slows the emptying of the gastric system, increases satiety, reduces appetite, and lowers liver fat content.

Traditionally, the plasma concentrations of exenatide have been measured by ligand-binding assays, such as immunoassays used for pharmacokinetic studies. Developing antibodies and assays for ligand-binding assays is very time-consuming, cost prohibitive, and lacks the precision and accuracy of chromatographic assays.

The ability to accurately quantify therapeutic peptides in biological fluids requires a selective isolation process, a high-resolution chromatography system (LC), and a high-sensitivity detector (MS). As these therapeutic peptides imitate and/or replace the activity of endogenous peptides, it is desirable for the detection process to differentiate the endogenous and exogenous compounds. Although therapeutic peptides exhibit multiple charged states, the more specific high molecular weights typically observed for such peptides benefit from a mass spectrometer with an upper mass range in the region of 2000 Da on both quadrupoles, for the successful analysis of higher mass precursor or product ions.

EXPERIMENTAL

LC conditions

System:	ACQUITY UPLC H-Class including the High Temperature Column Heater
Column:	ACQUITY UPLC BEH300 C ₁₈ 2.1 x 50 mm, 1.7 µm
Column temp.:	50 °C
Solvent:	0.2% formic acid in H ₂ O (A), and 0.2% formic acid in acetonitrile (B)
Gradient:	20% A to 85% A/2 min
Flow rate:	200 µL/min
Injection vol.:	10 µL
Run time:	5 min

Mass Spectrometry Conditions

MS Detector:	Xevo TQD
MRM data acquisition:	838 → 948; 838 → 396
Ion mode:	ESI positive
Capillary voltage:	3.00 kV
Desolvation gas flow:	800 L/h
Source temp.:	150 °C
Desolvation temp.:	350 °C

In this application note, we describe the successful implementation of sample preparation and column chemistries using Waters' ACQUITY UPLC H-Class System, and Xevo TQD Mass Spectrometer to develop an accurate, robust, and specific bioanalytical method for the quantification of exenatide in plasma.

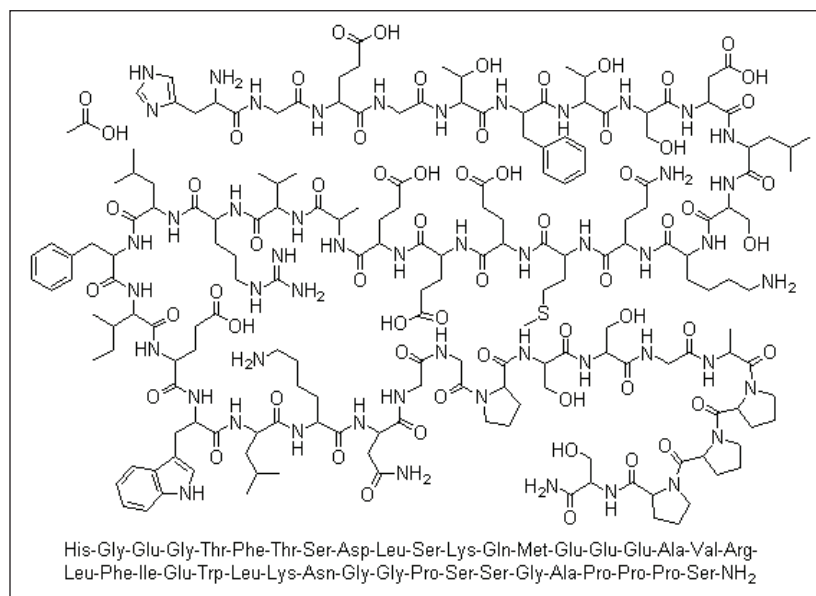


Figure 1. Chemical structure and amino acid sequence of exenatide.

Sample Preparation Protocol

Exenatide was spiked into plasma, and extracted using an Oasis MAX µElution plate with 375 µL of plasma diluted 1:1 with 5% NH₄OH. The samples were washed with 200 µL of 5% NH₄OH, followed by 200 µL of 20% acetonitrile, and eluted with 2x 25 µL of 50:40:5:5 Acetonitrile/IPA/H₂O/Formic acid. The resulting samples were diluted with 50 µL of H₂O containing the internal standard glucagon-like peptide.

A 10-µL aliquot of the sample was injected onto the column.

Data Management

Data was recorded and processed using MassLynx™ with TargetLynx™ Application Manager.

RESULTS AND DISCUSSION

Peptide therapeutics, unlike small molecules, exhibit less toxicity; however, they also exhibit high clearance and potency. Therefore, it is essential for the analytical technique of choice to have a fast, robust, reproducible, and sensitive method that would ensure determination and quantification of the peptide therapeutics and/or its metabolites in biological samples.

LC/MS/MS systems enable the user to accurately characterize the pharmacokinetics (PK) of such therapeutic peptides, especially for the low concentration of drugs after the T_{max}.

The Xevo TQD Mass Spectrometer is equipped with the proven ZSpray™ ionization source, maximizing sensitivity and robustness by the unique use of dual orthogonal geometry to enable efficient transmission of ions into the analyzer while, simultaneously, providing robust removal of non-ionized materials (neutrals).

Of the two MRM transitions mentioned in the Experimental section of this application note, the transition 838 → 946 was monitored for optimal resolution and sensitivity. Exenatide eluted with a retention time of 3.28 min, as shown in Figure 2. As can be seen from this data, the peak produced by the chromatography system is very symmetrical and has a width at the base of 8 s. The peak sharpness and its symmetrical nature allow for efficient processing and peak integration with good resolution from any endogenous interference.

The limit of quantitation (LOQ) for the assay was determined to be 1 ng/mL of exenatide in plasma, with a signal to noise ratio of ~16:1. Figure 2 also illustrates the injection of an extracted plasma blank injection, immediately following the analysis of the 1000 ng/mL standard. This data shows that there is no discernable carryover in the blank chromatogram. The extremely low carryover exhibited by the ACQUITY UPLC H-Class System allows the full sensitivity of the Xevo TQD Mass Spectrometer to be exploited.

A calibration line obtained for the assay of exenatide is shown in Figure 3, with a correlation coefficient of 0.9993 using a 1/x weighting linear regression.

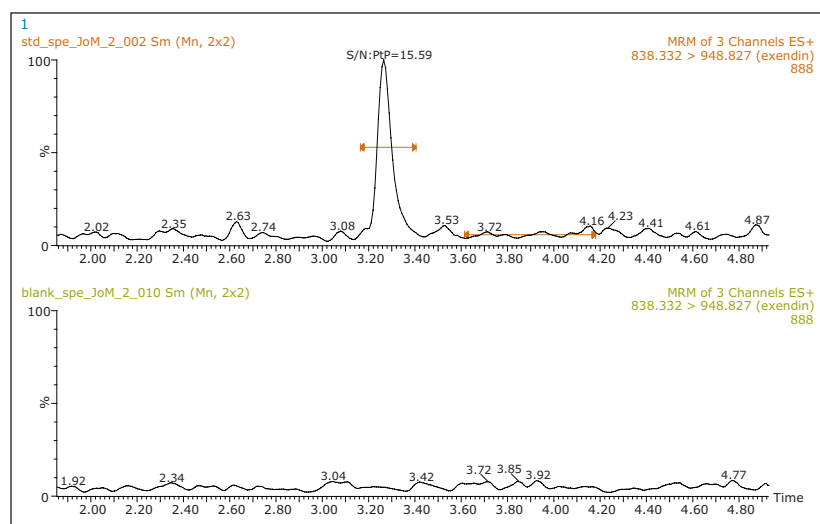


Figure 2. MRM transition (838 > 948) of 1 ng/mL exenatide (top) and blank plasma (bottom) samples.

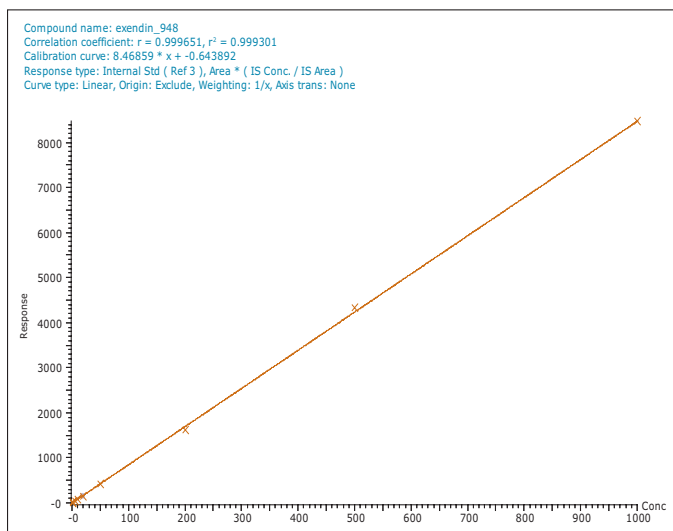


Figure 3. Calibration line for exenatide from 1 ng/mL to 1000 ng/mL.

CONCLUSIONS

- A sensitive method has been tested for the analysis of exenatide in plasma.
- Level of quantification was determined to be 1 ng/mL.
- No significant carryover was detected following the injection of 1 ng/mL sample of exenatide.

Waters

THE SCIENCE OF WHAT'S POSSIBLE.™

Waters, ACQUITY UPLC, Oasis, and Xevo are registered trademarks of Waters Corporation. MassLynx, TargetLynx, ZSpray, and The Science of What's Possible are trademarks of Waters Corporation. All other trademarks are the property of their respective owners.

©2012 Waters Corporation. Produced in the U.S.A.
 September 2012 720004470EN AG-PDF

Waters Corporation
 34 Maple Street
 Milford, MA 01757 U.S.A.
 T: 1 508 478 2000
 F: 1 508 872 1990
www.waters.com

