

Simplifying verification of peptide mapping results: A fundamental capability of the Waters Biopharmaceutical System Solution with UNIFI

GOAL

To demonstrate the enhanced capabilities of the UNIFI™ Scientific Information System to facilitate a user's review of raw LC/MS data from UPLC®/MS or UPLC/MS^E peptide mapping experiments.

BACKGROUND

Peptide mapping is a fundamental tool for the initial characterization of a biotherapeutic protein, and for monitoring that protein for new structural variants and altered levels of known product variants. The execution of such studies with high-resolution MS detection creates an information-rich pool of molecular data that can be challenging to mine for key results.

Software workflows designed for UPLC/MS peptide map analysis, such as BiopharmaLynx™ for MassLynx™ Software and the UPLC/MS peptide mapping workflow within Waters' Biopharmaceutical System Solution with UNIFI, can dramatically reduce data processing time and prevent manual review of data sets.

However, laboratory SOPs and the desire for user verification of key findings often result in the need to go beyond the use of the processed results generated by these tools. Analysts are often required to delve into the raw chromatographic and spectral data to verify information. The UNIFI Scientific Information System has been developed to manage this biopharmaceutical workflow need, and includes enhanced functionality to support such user verification workflows.

User verification of results is simplified, laboratory practices can be standardized, and time between data collection and development decisions will be reduced.

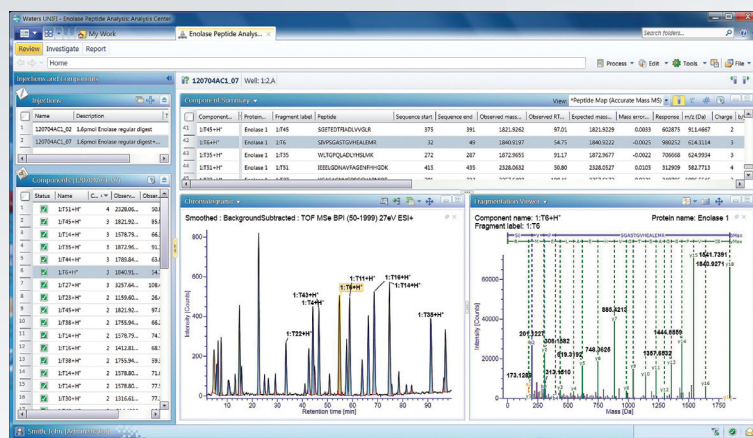


Figure 1. The Review tab in UNIFI facilitates component-driven examination of processed results for UPLC/MS^E peptide mapping data.

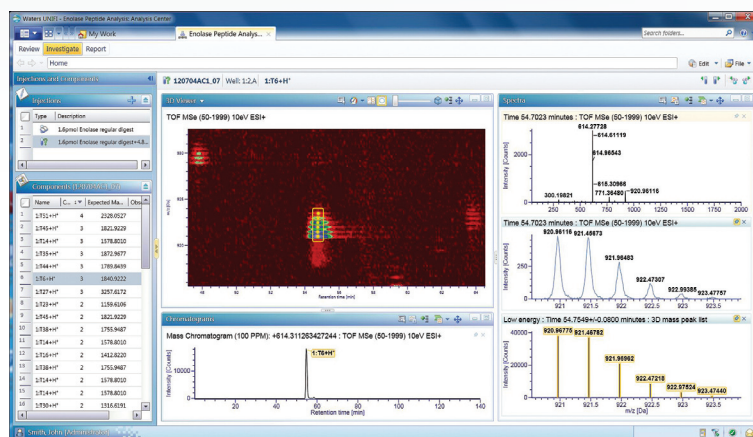


Figure 2. The Investigate tab in UNIFI permits both component-driven and open-ended analysis of raw UPLC/MS^E data.

THE SOLUTION

A UPLC/MS^E peptide map (120 min gradient) was acquired for the Enolase I protein from *S. cerevisiae*. Data were processed using the UNIFI UPLC/MS peptide mapping workflow using typical parameters (< 10 ppm mass error, assignment of tryptic, semi-tryptic, and single missed cleavage peptides, with the possibility of Asn deamidation, and Met oxidation).

A subset of the processed results for the map is displayed as a screen-captured image of UNIFI's Review tab for this data set (Figure 1). The Review tab provides interactive navigation of processed results between the main data table and various graphical display windows. Here, processed data for the selected T6 tryptic peptide is highlighted on the base peak intensity (BPI) chromatogram (~ 54.75 min) in the Chromatograms window, and the associated MS^E spectral data is displayed in the Fragmentation Viewer window. Along with tabular results, such information can be used for rapid confirmation that automated peak assignments were correctly generated.

For unexpected results, the user can dive deeper into the raw data to verify qualitative and quantitative findings in the processed data. Opening the Investigate tab (Figure 2) reveals areas for graphical and tabular display of chromatographic and mass spectral results directly from the raw UPLC/MS data.

These views support open-ended investigations driven by the user, e.g., selecting masses for data extraction, summing spectra, applying background corrections, etc. Conversely, processed components are available to enable component-driven analyses of the raw data. For simplification of this figure, the same T6 peptide was selected for further investigation.

- The 3D graphical viewer tool in Figure 2 (top left, 2D view, smart-zoom of the 2+ ions) reveals the absence of any interference within the spectral data for this component, and highlights the series of isotopic detections within the 2+ charge state cluster.
- More importantly, T6 related extracted ion chromatograms (bottom left), summed spectra (top right, mid right), and processed spectral identification data (bottom right) were automatically generated using selectable commands associated with the component window (Figure 3).
- This component-driven analysis of raw UPLC/MS data not only reduces the amount of time for a user to access this additional map verification data, but standardizes the way in which this is accomplished across a single map, or across all mapping analyses conducted by a laboratory.

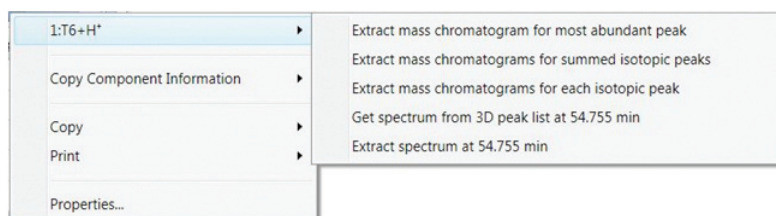


Figure 3. For each component detected, the extracted mass chromatograms, summed MS spectra, and associated processed spectral features can be automatically generated.

SUMMARY

The ability of a scientist to have free reign for the review of raw data underlying a processed data set is a fundamental requirement for software applied for the analysis of complex biotherapeutic UPLC/MS data. The capabilities of the UNIFI Scientific Information System go beyond this basic requirement, and facilitate the intelligent generation of meaningful raw chromatographic and mass spectral data views, using values derived from detected map components. User verification of results is simplified, laboratory practices can be standardized, and the time between data collection and better development decisions will be reduced.

Waters

THE SCIENCE OF WHAT'S POSSIBLE.™



Waters and UPLC are registered trademarks of Waters Corporation. UNIFI, MassLynx, Empower, BiopharmaLynx, and The Science of What's Possible are trademarks of Waters Corporation. All other trademarks are the property of their respective owners.

©2011 Waters Corporation. Produced in the U.S.A.
January 2011 720003842EN LB-PDF

Waters Corporation
34 Maple Street
Milford, MA 01757 U.S.A.
T: 1 508 478 2000
F: 1 508 872 1990
www.waters.com