

OASIS SAMPLE EXTRACTION PRODUCTS: ENHANCED SENSITIVITY USING μ ELUTION PLATE

INTRODUCTION

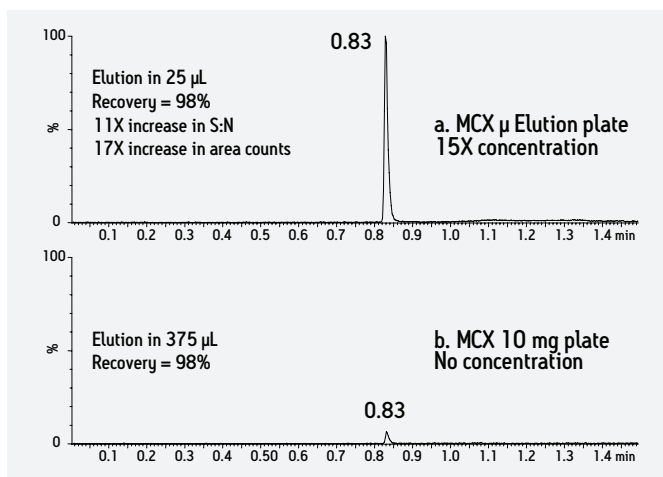
Waters Oasis® μ Elution plates combine patented plate design and proven Oasis chemistries to provide high analyte recovery and clean extracts in elution volumes as low as 25 μ L. This can enhance a bioanalytical assay's sensitivity and allow scientists to easily achieve their required LLOQs.

- Ideal for small sample volumes (10-25 μ L)
- Eliminates evaporation and reconstitution
- Offers up to a 15X increase in concentration without evaporation
- Excellent recovery for a diverse range of therapeutic peptides

Superior Sensitivity with μ Elution format

The Oasis μ Elution format offers sample enrichment of up to 15X, providing superior sensitivity to bioanalytical assays.

Risperidone response: 15X increase in concentration



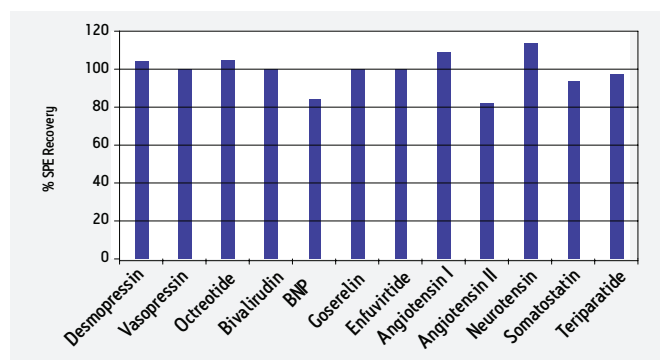
375 μ L of 0.5 ng/mL risperidone in human plasma sample extracted with Oasis MCX μ Elution plate a) MCX μ Elution and b) MCX 10 mg.

Highest SPE Recoveries

Oasis sorbents are water-wettable which allows them to maintain high retention and capacity for a variety of analytes even if the well or cartridge runs dry. With Oasis sorbents, the analytical scientist can be assured of reliable, robust performance and the highest degree of recovery possible.

The efficient therapeutic peptide solid-phase extraction (SPE) screening strategy, based on a single protocol and two of the Oasis mixed-mode sorbents in μ Elution format, simplifies method development for the extraction of peptides from human plasma and provide excellent recoveries for diverse set of peptides.

Excellent SPE Recovery for 12 Peptides

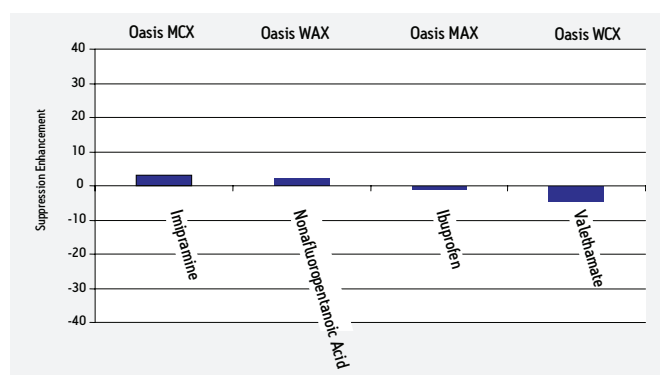


Excellent recovery for 12 diverse peptides using Oasis Mixed-Mode SPE in μ Elution plate format.

Lowest Matrix Effects

The combination of Oasis mixed-mode SPE and the μ Elution format provide the cleanest SPE extract possible, facilitating the meeting of regulatory bioanalytical requirements.

Matrix Effects for 1 ng/mL of Imipramine, Nonafluoropentanoic Acid, Ibuprofen, and Valethamate in Human Plasma



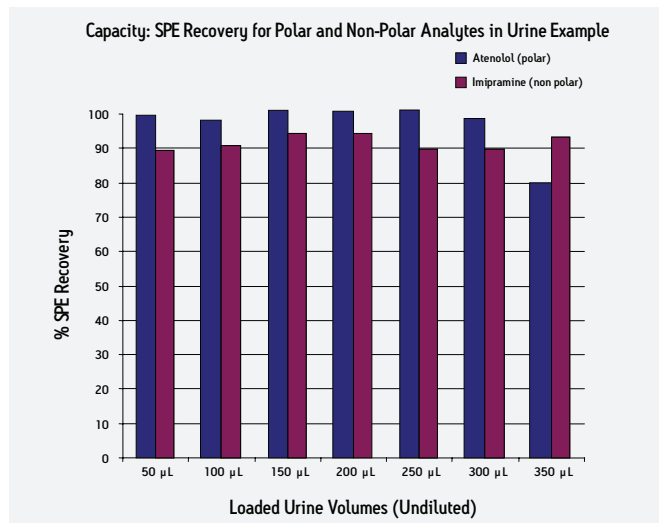
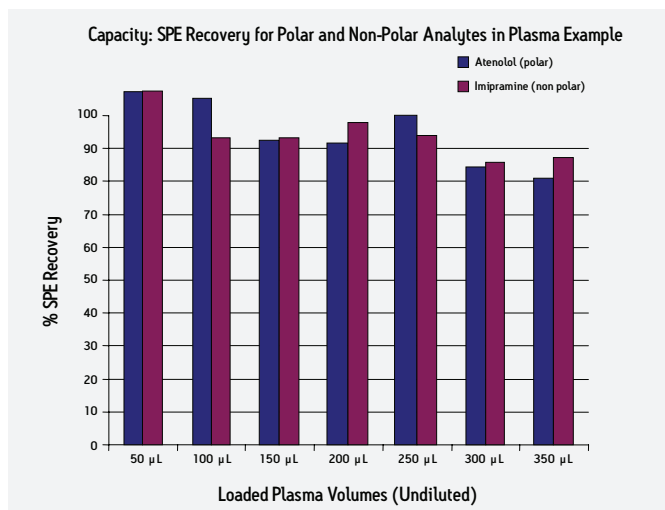
Matrix effect results of 4 diverse small molecules on 4 mixed-mode Oasis chemistries in (1 ng/mL in human plasma).

μElution Plate Loading Capacity

The physicochemical properties of Oasis sorbents are designed to provide exceptionally high loading capacity, even though each well in a Waters Oasis μElution plate contains only 2 mg of Oasis sorbent.

To determine the Oasis μElution plate capacity, increasing volumes of plasma and urine samples (from 50 μL to 350 μL in 50 μL increments) were spiked with 200 ng/mL Imipramine (non-polar base) and 200 ng/mL Atenolol (polar base). The plasma aliquots were diluted 1:1 with 4% aqueous H₃PO₄ and the urine aliquots were diluted 1:1 with H₂O and then loaded onto the μElution plate. SPE recovery was calculated and plotted for each loading level.

SPE Recovery for 200 ng/mL Imipramine and 200 ng/mL Atenolol on Oasis MCX μElution Plate



CONCLUSION

Using a unique plate design in combination with Oasis sorbents, the Oasis μElution plates are an ideal solution for small sample volumes up to 375 mL, providing up to a 15X increase in concentration. This concentration, along with excellent recoveries, equates to unparalleled sensitivity for bioanalytical samples.

Austria and European Export (Central South Eastern Europe, CIS and Middle East) 43 1 877 18 07, Australia 61 2 9933 1777, Belgium 32 2 726 1000, Brazil 55 11 4134 3788, Canada 1 800 252 4752 x2205, China 86 21 6879 5888, CIS/Russia +497 727 4490/290 9737, Czech Republic 420 2 617 1 1384, Denmark 45 46 59 8080, Finland 358 9 5659 6288, France 33 1 30 48 72 00, Germany 49 6196 400600, Hong Kong 852 2964 1800, Hungary 36 1 350 5086, India and India Subcontinent 91 80 2837 1900, Ireland 353 1 448 1500, Italy 39 02 265 0983, Japan 81 3 3471 7191, Korea 82 2 6300 4800, Mexico 52 55 5524 7636, The Netherlands 31 76 508 7200, Norway 47 6 384 60 50, Poland 48 22 6393000, Puerto Rico 1 787 747 8445, Singapore 65 6593 7100, Spain 34 936 009 300, Sweden 46 8 555 11 500, Switzerland 41 56 676 70 00, Taiwan 886 2 2543 1898, United Kingdom 44 208 238 6100, All other countries: Waters Corporation U.S.A. 1 508 478 2000/1 800 252 4752

Waters

THE SCIENCE OF WHAT'S POSSIBLE.™

© 2010 Waters Corporation. Waters, The Science of What's Possible, and Oasis are trademarks of Waters Corporation.

Printed in the U.S.A.

720003680EN September 2010 KK-AC

Waters Corporation
34 Maple Street
Milford, MA 01757 U.S.A.
T: 1 508 478 2000
F: 1 508 872 1990
www.waters.com

