

OASIS SAMPLE EXTRACTION PRODUCTS: METHODOLOGY

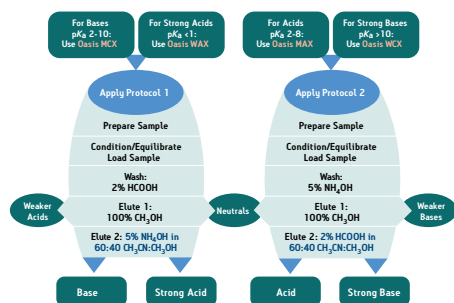
INTRODUCTION

The Oasis® methodology provides a high degree of selectivity for the extraction of analytes from complex biological matrices. By selecting the appropriate Oasis sorbent and protocol, the bioanalytical scientist is able to develop sensitive, reproducible, and robust methods.

Follow the simple steps outlined in this flow chart to achieve high recoveries and the cleanest extracts:

- Characterize your analyte (Neutral, Acid or Base, pKa).
- Select one of the four Oasis sorbents.
- Apply the indicated Protocol (1 or 2).
- Determine SPE recoveries by LC analysis.

Oasis 2 x 4 Method



The proven Oasis 2x4 method elution solvent is optimized to accommodate the elutropic requirement of the small elution volume. Methanol is good as a generic elution solvent, but is often not strong enough for 25 µL elution volumes. The elution solvent recommended to be used with the µElution plate must possess a high enough elutropic strength to fully elute analytes in small volumes, and be appropriate for a diverse set of analytes. The recommended elution solvent for the Oasis 2x4 method optimized for the µElution plate format is 60% CH₃CN: 40% CH₃OH with a modifier. This was chosen as a starting point as it meets all of the above criteria.

Recovery Study:

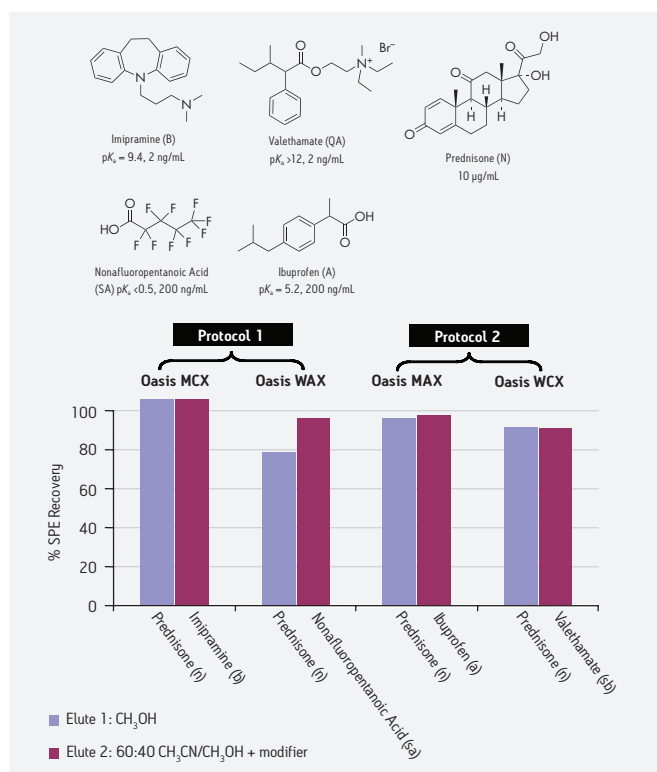
To demonstrate the logic, simplicity, and effectiveness of the Oasis 2x4 method, five samples of rat plasma were prepared, each spiked with one of the previously characterized test analytes shown below:

- Imipramine: pKa = 9.4 (Base).
- Ibuprofen: pKa = 5.2 (Acid).
- Valethamate: pKa > 12 (Quaternary Amine).

- Nonafluoropentanoic Acid: pKa < 0.5 (Strong Acid).
- Prednisone: Neutral.

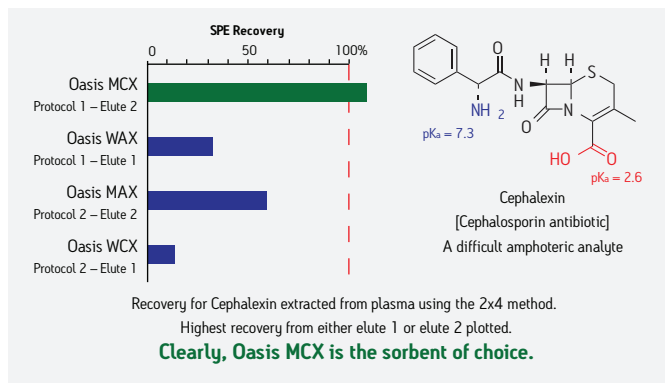
Each plasma sample was diluted [1:1, v:v] and acidified with phosphoric acid [4% in water]. Respective aliquots were then processed on Oasis µElution sorbent selection plate, using the protocol and the Oasis mixed-mode sorbent designated by the Oasis 2x4 Method for the corresponding sample type. LC/MS/MS analysis was used to determine SPE recoveries. The neutral analyte was processed on all four sorbents used.

Analytes Spiked into Rat Plasma



Oasis Sorbent Selection Plates and Cartridge Kit

The Oasis Sorbent Selection Plates and Cartridge Kit were developed to facilitate rapid development of SPE methods for LC/MS analysis. Having all four Oasis mixed-mode sorbents (MCX, MAX, WAX and WCX) in a single plate is convenient for scouting the best ways to accomplish efficient isolation of unknown, zwitterionic compounds, or mixtures of analytes with different retention/elution properties.



Oasis HLB Generic Method

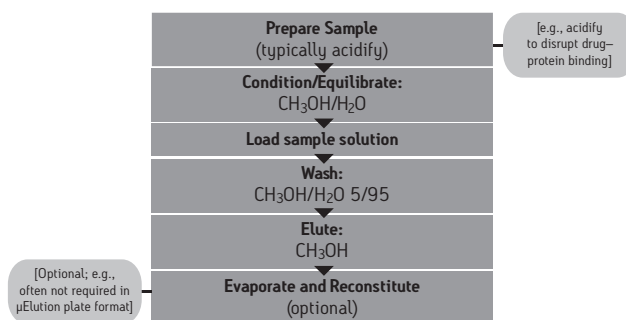
When isolating a range of acidic, basic, and neutral compounds, a generic method using Oasis HLB (reversed-phase only sorbent) is recommended to remove unretained matrix constituents [e.g., salts, sugars, polar lipids, proteins) while reproducibly retaining, and subsequently eluting, a broad chromatographic polarity range of acidic, basic, and neutral analytes.

When transferring methods from C18-bonded-silica phases, consider these four unique advantages of Oasis HLB:

- Its higher capacity (2-3X more surface area) means correspondingly less sorbent weight is required. Bed and elution volumes can be reduced. Smaller-scale device formats are more effective.
- Its higher retention power (3-5X) reduces breakthrough, increases enrichment factors, and permits finer tuning of gradient steps for more selective washing and elution sequences. Especially hydrophobic analytes may require stronger elution solvents.

- Oasis sorbents are water-wettable, maintaining high retention and capacity for a wide spectrum of analytes even if the well or cartridge runs dry.
- The base co-polymer particle is stable from pH 0-14.

Oasis HLB Generic Method for Acids/Neutrals/Bases



CONCLUSION

The Oasis 2x4 Method is a simple, logical approach to the selection of a mixed-mode SPE sorbent and protocol. Two protocols and four sorbents provide the flexibility to extract acids, bases, and neutrals with high SPE recoveries while removing matrix components that may interfere with analysis. The generic HLB method provides a simple, universal solution for simultaneously extracting a broad range of compounds from biological matrices.

Austria and European Export (Central South Eastern Europe, CIS and Middle East) 43 1 877 18 07, Australia 61 2 9933 1777, Belgium 32 2 726 1000, Brazil 55 11 4134 3788, Canada 1 800 252 4752 x2205, China 86 21 6879 5888, CIS/Russia +497 727 4490/290 9737, Czech Republic 420 2 617 1 1384, Denmark 45 46 59 8080, Finland 358 9 5659 6288, France 33 1 30 48 72 00, Germany 49 6196 400600, Hong Kong 852 2964 1800, Hungary 36 1 350 5086, India and India Subcontinent 91 80 2837 1900, Ireland 353 1 448 1500, Italy 39 02 265 0983, Japan 81 3 3471 7191, Korea 82 2 6300 4800, Mexico 52 55 5524 7636, The Netherlands 31 76 508 7200, Norway 47 6 384 60 50, Poland 48 22 6393000, Puerto Rico 1 787 747 8445, Singapore 65 6593 7100, Spain 34 936 009 300, Sweden 46 8 555 11 500, Switzerland 41 56 676 70 00, Taiwan 886 2 2543 1898, United Kingdom 44 208 238 6100, All other countries: Waters Corporation U.S.A. 1 508 478 2000/1 800 252 4752

Waters

THE SCIENCE OF WHAT'S POSSIBLE.™

© 2010 Waters Corporation. Waters, The Science of What's Possible, and Oasis are trademarks of Waters Corporation.

Printed in the U.S.A.

720003679EN September 2010 KK-AC

Waters Corporation
34 Maple Street
Milford, MA 01757 U.S.A.
T: 1 508 478 2000
F: 1 508 872 1990
www.waters.com

