

IDENTIFICATION AND QUANTIFICATION OF PROTEIN MODIFICATIONS BY PEPTIDE MAPPING WITH UPLC/MS^E

Hongwei Xie, Martin Gilar, John C. Gebler
Waters Corporation, Milford, MA, U.S.

INTRODUCTION

Protein-based pharmaceuticals are an important class of bio-therapeutic compounds. Although proteins are relatively stable molecules, they are subject to a variety of covalent modifications that occur during manufacturing, formulation, and storage. Modifications have the potential to affect activity and safety of protein drugs. Effective monitoring of them is imperative for ensuring the quality of therapeutic proteins.

Liquid chromatography (LC)-based peptide mapping is suitable for detection of covalent modifications. However, for identification of site-specific modifications, tandem mass spectrometry (MS/MS) sequencing is required. This is especially the case when several possible sites in the peptide can be modified.

In data-dependent acquisition (DDA) LC/MS/MS sequencing, multiple experiments usually need to be performed to elucidate the structure of peptides in protein digests. Detailed DDA LC/MS/MS analysis of peptide maps is a time-consuming task.

Recently, we have demonstrated that peptide mapping with UltraPerformance LC® (UPLC®) and data-independent acquisition mass spectrometry (UPLC/MS^E) is effective for characterization of protein maps,¹⁻³ providing high sequence coverage and assignment of nearly all LC peaks in the map. The parallel and unbiased data-independent acquisition of precursor and fragmentation data by MS^E⁴⁻⁵ overcomes the limitations of DDA and also delivers reliable quantitative data.

In this application note, we demonstrate the utility of UPLC/MS^E for identification and quantification of covalent modifications in a yeast alcohol dehydrogenase (ADH) digest. Two common modifications, methionine (M) oxidation and asparagine (N) deamidation, are examined. Modified peptides were clearly distinguished from low-abundant peptides originating from impurity proteins or unexpected peptides resulted from non-specific digestion.

EXPERIMENTAL

Sample preparation and UPLC/MS^E experimental procedure were similar to previous descriptions.¹⁻² Briefly, ADH was digested with enzyme trypsin after reduction with dithiothreitol and alkylation with iodoacetamide. The resulting peptide mixture was separated using ACQUITY UPLC® System and detected using MS^E on a SYNAPT™ MS system. Freshly prepared tryptic digest (120 pmol) was injected for the UPLC/MS^E analysis. The analysis was repeated three times.

LC conditions

LC system:	Waters ACQUITY UPLC System
Mobile phase A:	0.1% formic acid in water
Mobile phase B:	0.1% formic acid in acetonitrile
Column:	ACQUITY UPLC Peptide Separation Technology C ₁₈ , BEH300Å, 2.1 x 100 mm, 1.7 µm
Column temp:	40 °C
Gradient:	0-50% B in 90 min
Flow rate:	0.2 mL/min
Detection:	MS ^E

The acquired data were processed by Identity^E Software, part of ProteinLynx Global SERVER™ 2.3. The processed data¹⁻² were first searched against a yeast database (containing 6139 open reading frames) with trypsin specificity and one potential miscleavage. Then, the data were searched again against the ADH1 sequence with no enzyme specified. N-deamidation, M-oxidation, N-terminal acetylation and C-carbamidomethylation were allowed as variable modifications.

RESULTS AND DISCUSSION

In order to profile sub-stoichiometric modifications in the protein, 120 pmol ADH tryptic digest was injected for the UPLC/MS^E experiments. Figure 1 shows an example UPLC/MS^E chromatogram.

The collected MS^E data were first searched against a yeast database in order to verify the identity of ADH1 and search for potential impurity proteins. Target protein ADH1 and two impurity proteins, ADH5 and Ylr301wp, were found. The concentration of impurity

proteins, normalized to ADH1, was 5% and 0.74% for ADH5 and Ylr301wp, respectively.

Subsequently, the MS^E data were searched again against a truncated database containing only ADH1 sequence. The search was purposefully relaxed (no enzyme specificity) to allow for identification of non-specifically cleaved and modified peptides. The ADH1 sequence coverage was 98%.

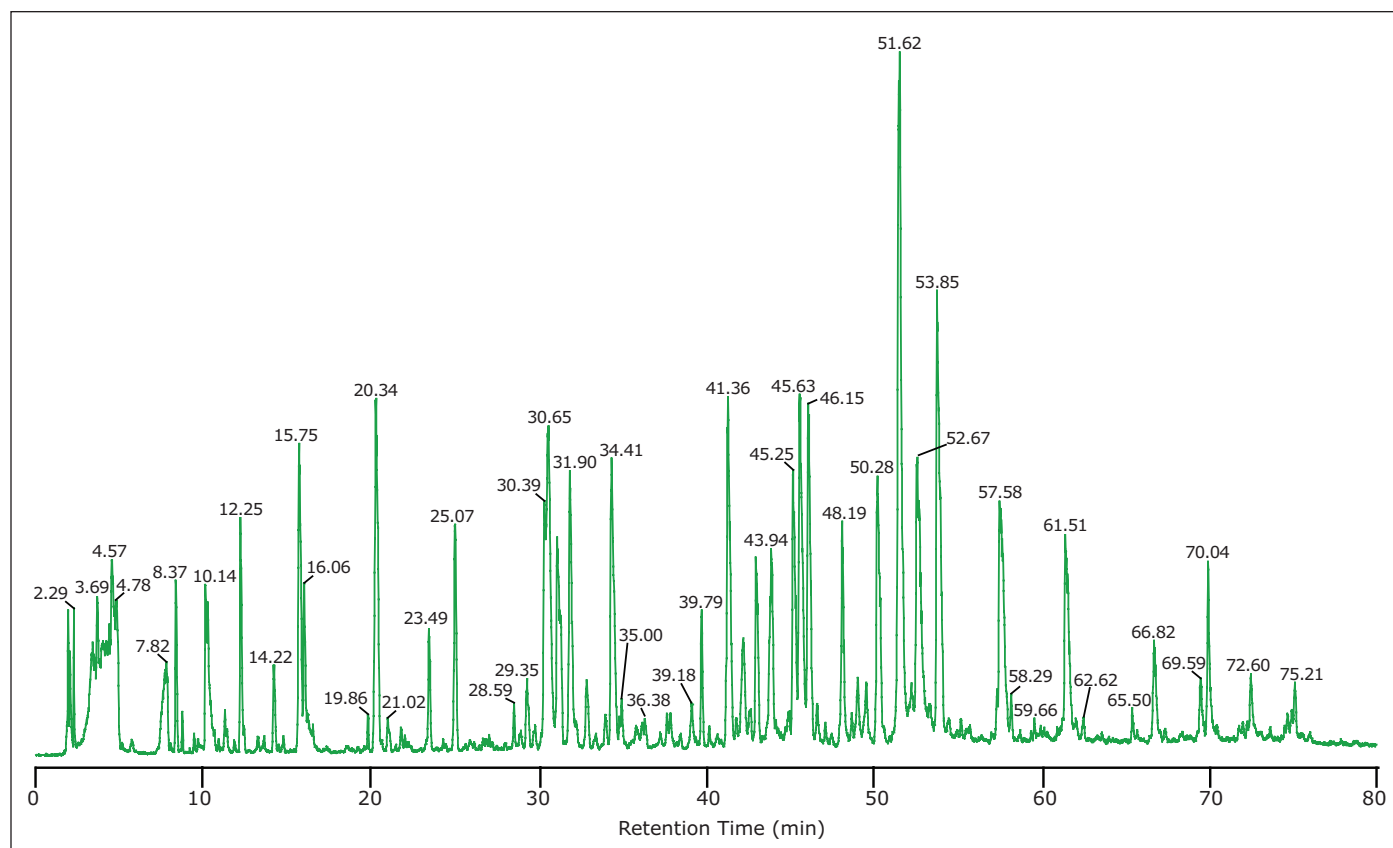


Figure 1. UPLC/MS^E chromatogram of ADH tryptic digest.

[APPLICATION NOTE]

Table 1 shows sequences of eight modified amino acid sites located in seven tryptic peptides, including N-terminal acetylation, three oxidized methionines and four deamidated asparagines. The modification type, site, and stoichiometry as well as retention time (RT) of identified modified peptides are presented. The comparisons of MS^E spectra of peptide T12 with and without M-oxidation, and peptide T22 with and without N-deamidation, are shown in Figures 2 and 3, respectively, demonstrating confident identification of the modifications.

The relative quantification of modified peptides calculated from MS signal intensity (Table 1) shows that over 99% of N-terminal of ADH1 were found to be acetylated. Three methionines in the protein sequence were found to be oxidized to a relatively low degree, less than 2% for M75 and M168 sites, and approximately 10% for M270 site. In addition to M-oxidation, the peptide T21 was nearly completely deamidated at N262 site (97%), present in four isoforms as shown in Table 1. Similarly, high percentage of deamidation was observed for N94 site.

Peptide	Modification Type	Sequence ¹ & Modification Site	Cleavage ²	MH ⁺	RT (min)	Stoichiometry ± SD ³ (%)
T1	N-terminal Acetylation	SIPETQK	Fully	844.441	25.07	99.1 ± 0.01
T1	No Modification	SIPETQK	Fully	802.431	16.37	0.9 ± 0.01
T7	Oxidation M75	LPLVGGHEGAGVVVG M GENVK	Fully	2035.064	46.59	1.8 ± 0.30
T7	No Modification	LPLVGGHEGAGVVVG M GENVK	Fully	2019.069	52.70	98.2 ± 0.30
T12	Oxidation M168	SAN L MAGHWVAISGAAGGLGSLAVQYAK	Fully	2716.388	65.82	1.7 ± 0.33
T12	No Modification	SAN L MAGHWVAISGAAGGLGSLAVQYAK	Fully	2700.393	70.01	98.3 ± 0.33
T21	Deamidation N262 + Oxidation M270	AN G TTVLVG M PAGAK	Fully	1403.720	34.03	1.0 ± 0.01
T21	Deamidation N262 + Oxidation M270	AN G TTVLVG M PAGAK	Fully	1403.720	43.99	8.8 ± 1.35
T21	Deamidation N262	AN G TTVLVGMPAGAK	Fully	1387.725	43.97	84.1 ± 1.72
T21	Deamidation N262	AN G TTVLVGMPAGAK	Fully	1387.725	44.27	3.0 ± 0.39
T21	No Modification	ANGTTVLVGMPAGAK	Fully	1386.741	43.07	3.1 ± 0.01
T5	Deamidation N31	AN E LLINVK	Fully	1014.583	43.54	1.4 ± 0.10
T5	Deamidation N31	AN E LLINVK	Fully	1014.583	47.18	1.4 ± 0.19
T5	No Modification	ANELLINVK	Fully	1013.599	45.66	97.2 ± 0.08
T22	Deamidation N282	C* C *SDV F NQVVK	Fully	1356.592	37.93	4.8 ± 0.01
T22	Deamidation N282	C* C *SDV F NQVVK	Fully	1356.592	44.95	3.3 ± 0.04
T22	No Modification	C* C *SDVFNQVVK	Fully	1355.608	43.07	91.9 ± 0.08
P1	Deamidation N94	WL N GSC*MAC*EYC*ELGNESNC*PHADLSGYTHDGSFQQY	Partially	4358.689	59.67	100 ⁴
P2	Deamidation N94	WL N GSC*MAC*EYC*ELGNESNC*PHADLSGYTH	Partially	3533.360	55.82	100
P3	Deamidation N94	WL N GSC*MAC*EYC*ELGNESNC*PHADLSGY	Partially	3295.253	58.80	100
P4	Deamidation N94	WL N GSC*MAC*EYC*ELGNESNC*PH	Partially	2688.988	52.51	100
P5	Deamidation N94	WL N GSC*M	Partially	868.333	42.63	100

¹ C* - Carbamidomethyl C; Amino acid in red is with modification; Each deamidated N results in two isoforms, isoaspartic acid and aspartic acid.
² Fully - Fully Tryptic; Partially - Partially Tryptic.
³ In percentage (%), an average from 3 replicate analyses and calculated by
Intensity of the Modified Peptide / (Intensity of the Modified Peptide + Intensities of Related Unmodified and Other Modified Peptides)
SD - Standard Deviation.
⁴ Identified partially tryptic peptides with N94 deamidation from the longest peptide T10 (28 amino acids, M.W. 7601.4); No corresponding peptides without N94 deamination was identified.

Table 1. Modification type, site, and stoichiometry of modified ADH1 peptides.

Although the tryptic peptide T10 (consisting of 69 amino acids, molecular weight 7601.4) was not detected, a series of partially-tryptic N94-deamidated peptides covering part of the missing T10 sequence were found (P1, P2, P3, P4, P5 as shown in Table 1). The non-deamidated versions of these peptides were not detected. Finally, the deamidation of N31 and N282 sites was found to be less than 10%.

Peptide RT shift upon modification can be used as an additional confirmation of sequence modification. In general, N-terminal acetylation increases, while M-oxidation decreases the peptide retention. The RT of N-terminal peptide T1 shifted from 16.37 min to 25.07 min after N-terminal acetylation. In contrast, the RT shifted from 52.7 min to 46.59 min for peptide T7 and from 70.0 min to 65.82 min for peptide T12 after M-oxidation in these peptides.

In the case of N-deamidation, the RT trends are more complex because of the presence of two product isoforms: isoaspartic acid and aspartic acid. Usually, N-deamidated peptide with isoaspartic acid elutes earlier and the other deamidated one with aspartic acid later than the unmodified peptide. There are exceptions to this rule, but the retention order observed here was always the isoform with isoaspartic acid < aspartic acid isoform.

The retention pattern of unmodified peptide T22 and its two N282-deamidated isoforms is presented in Figure 3a. Since the two deamidated isoforms are isobaric (both +0.98 Da mass difference from the unmodified T22), they cannot be distinguished from MS or MS^E data. In such cases, the UPLC separation and RT information of these peptides are important for the identification. However, MS^E can easily differentiate N-deamidated peptide from unmodified peptide, as shown in Figure 3, with a high mass resolution and high mass accuracy platform such as the SYNAPT MS System.

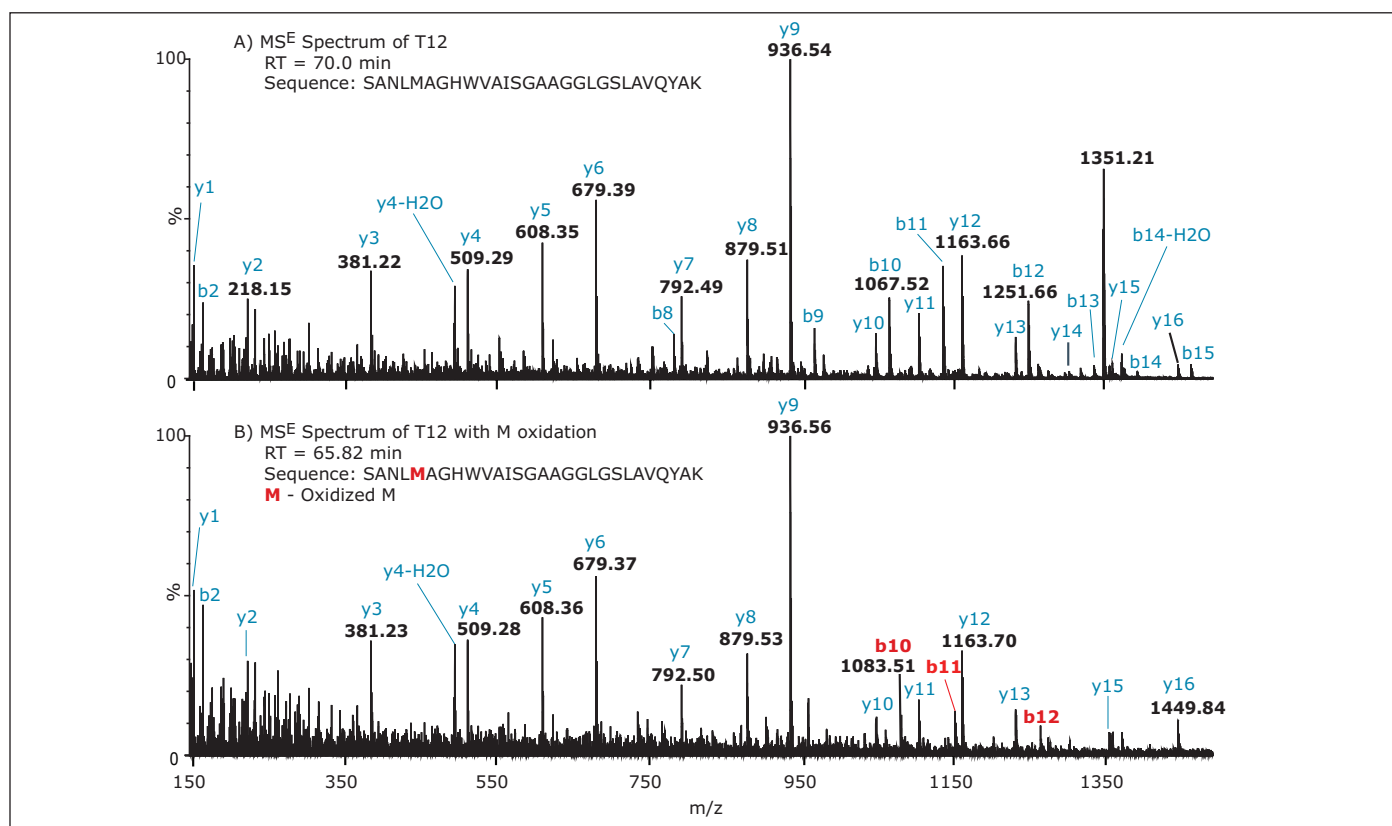


Figure 2. MS^E spectra of peptide T12 (SANLMAGHWVAISGAAGGLGSLAVQYAK) without (top, A) and with (bottom, B) M168 oxidation. b10, b11, and b12 (marked in red) clearly show the oxidation.

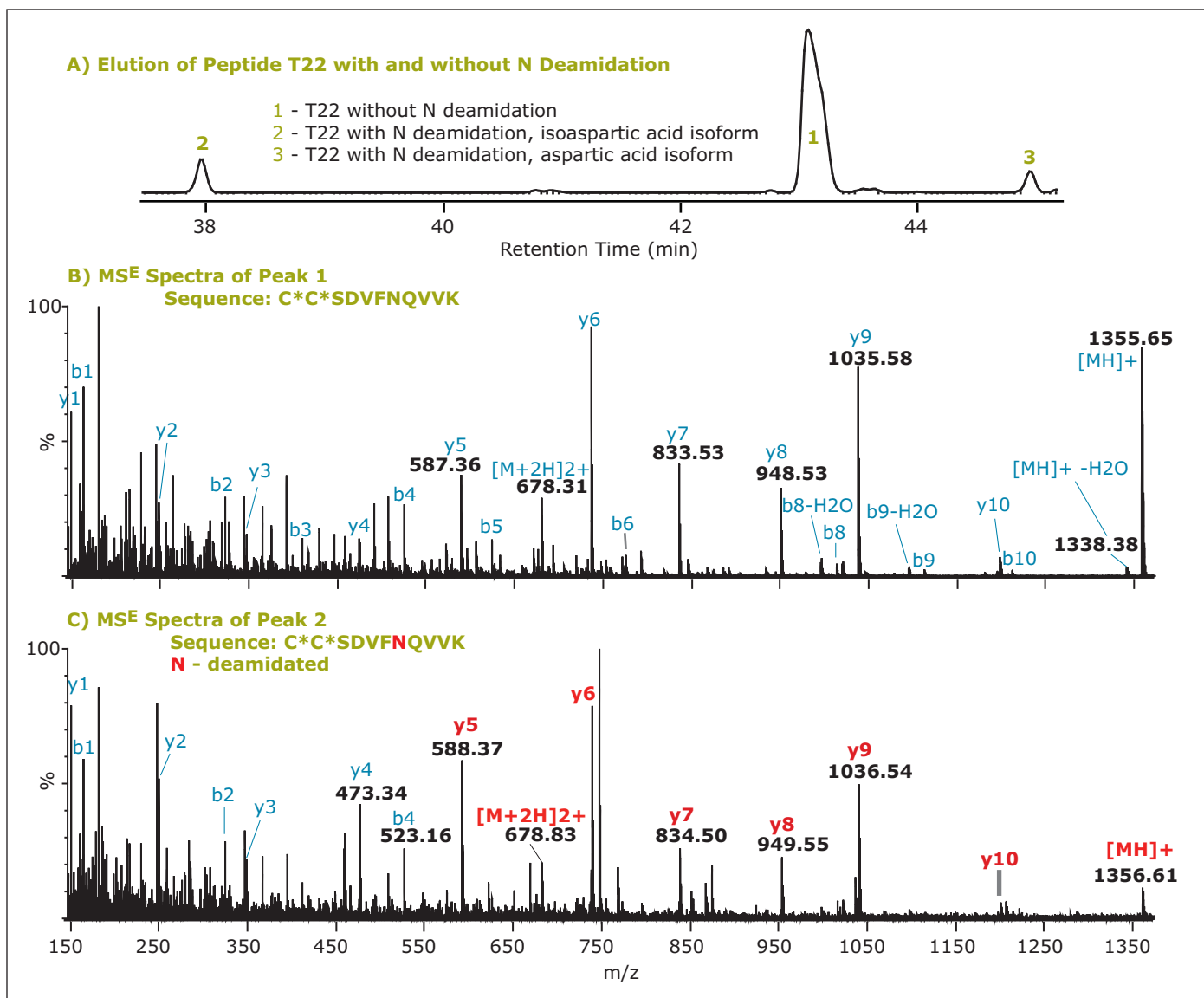


Figure 3. Elution pattern and MS^E spectra of peptide T22 (C*C*SDVFNQVVK) without and with N282 deamidation. A) Elution pattern; B) MS^E spectrum without N282 deamidation; C) MS^E spectrum with N282 deamidation, isoaspartic acid isoform. y ions (marked in red) starting from y5 clearly show the deamidation. C* is carbamidomethyl C.

CONCLUSIONS

The results presented here demonstrate application of UPLC/MS^E for characterization of protein peptide maps. UPLC/MS^E was successfully used for identification and quantification of modifications in ADH1. The stoichiometry of modifications ranged from 1% to 99%. In conclusion, peptide mapping with UPLC/MS^E allows for:

- High sequence coverage
- Separation and identification of modified peptides, with modification site and type determined
- Quantification of protein modifications
- Successful determination of sub-stoichiometric modifications at 1% level
- Distinguishing sub-stoichiometric protein modifications (on the peptide level) from peptides originating from impurity proteins contaminating ADH1 at 5% and 0.7% relative levels.

UPLC/MS^E, combining here the ACQUITY UPLC and SYNAPT MS systems, meets requirements for robust and flexible methods that are needed to monitor safety and stability of biopharmaceutical proteins.¹⁻³ This technology is a fitting choice for biopharmaceutical research and development laboratories. Since it is suitable for establishing protein sequence and characterizing protein covalent modifications and impurities within a single UPLC run, the method will expedite the recombinant protein drug development and manufacturing processes, and reduce their cost.

References

1. Xie HW, Gilar M, Gebler JC. High Sequence Coverage Mapping Tryptic Digest of a Monoclonal Antibody with UPLC/MS^E. Waters Application Note. 2009; 720002821en.
2. Xie HW, Gilar M, Gebler JC. Characterization of Protein Impurities by Peptide Mapping with UPLC/MS^E. Waters Application Note. 2009; 720002809en.
3. Chakraborty AB, Berger SJ, Gebler JC. Rapid Comm. Mass Spec., 2007, 21: 730.
4. Silva JC, Denny R, Dorschel CA, Gorenstein M, Kass IJ, Li GZ, McKenna T, Nold MJ, Richardson K, Young O, Geromanos SJ. Anal. Chem., 2005, 77: 2187.
5. Silva JC, Gorenstein MV, Li GZ, Vissers JP, Geromanos SJ. Mol. Cell. Proteomics, 2006, 5: 144.

Waters

THE SCIENCE OF WHAT'S POSSIBLE.™



Waters, ACQUITY UPLC, UltraPerformance LC, and UPLC are registered trademarks of Waters Corporation. SYNAPT, ProteinLynx Global SERVER, and The Science of What's Possible are trademarks of Waters Corporation. All other trademarks are the property of their respective owners.

©2009 Waters Corporation. Printed in the U.S.A.
April 2009 720003009en AG-PDF

Waters Corporation
34 Maple Street
Milford, MA 01757 U.S.A.
T: 1 508 478 2000
F: 1 508 872 1990
www.waters.com