

Jim Krol & Mark Benvenuti, Applications Chemists,
Waters Corp., Milford, MA

Introduction

The analysis of perchlorate anion in drinking water is a current concern for the US Environmental Protection Agency (EPA), and environmental scientists. The current EPA Method 314 using ion chromatography with suppressed conductivity detection has difficulty reliably quantifying less than 1 ppb ($\mu\text{g/L}$) perchlorate in water containing high concentrations of dissolved solids, mainly the chloride and sulfate salts. Conductivity detection cannot provide this capability, which has caused false positive perchlorate quantification. Hence, the EPA has validated 2 chemistries all using mass spectrometry to overcome this problem. In February 2005, the official reference dose (RfD) for perchlorate was established at 0.0007 mg/kg/day. For a 70 kg person, this represents consuming 2 liters of drinking water containing 25.5 ppb perchlorate. But since perchlorate comes from many sources, sub-ppb detection limits are desirable.

EPA Methods 331.0 and 332.0

Mass spectrometry detects inorganic anions using negative electrospray (-ESP) based upon the molecular weight of the anion, M_a^- . Simultaneously, several anions, such as perchlorate, are present as isotopic analogs. As an example, chlorine is found in nature approximately as 75% ^{35}Cl and 25% ^{37}Cl ; perchlorate is present as $^{35}\text{ClO}_4^-$, molecular weight 99; and $^{37}\text{ClO}_4^-$, molecular weight 101.

Single Quadrupole Mass Spectrometry

The EPA Method 331 is an LC/MS/MS method not requiring chemical suppression technology, and EPA Method 332 is an LC/MS method requiring chemical suppression for the analysis of perchlorate. This application note combines the best of both methods for the simple LC/MS analysis of perchlorate.

Although not as sensitive as tandem quadrupole, Waters Micromass® ZQ™ Single Quadrupole Mass Spectrometer has demonstrated the ability for quantifying perchlorate below 1 ppb. Figure 1 shows

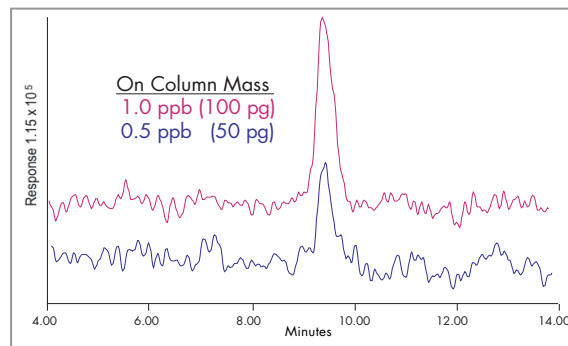


Figure 1. SIR Chromatogram at molecular weight 99.

the response of 1 ppb and 0.5 ppb perchlorate using Single Ion Recording (SIR) analysis at molecular weight 99.

Drinking water is a unique matrix varying in the concentrations of organic and inorganic salts. These high-dissolved water salts pose the greatest challenge to the IC method 314.0, and also pose a minor problem for mass spectrometry. The first is the resolution of low ppb perchlorate from high ppm concentrations of Cl and SO_4 .

Generally, monovalent perchlorate elutes from an anion exchange column after a divalent sulfate. This is because perchlorate has some non-polar characters that allow it to retain on the polymeric anion exchange column by reversed-phase principles. All aqueous IC eluents show this selectivity. However, if

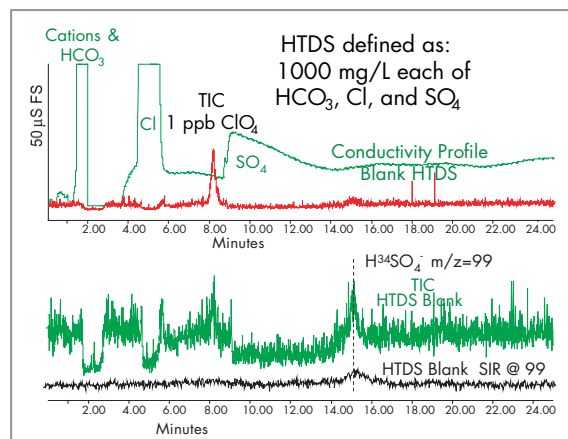


Figure 2. 1 ppb perchlorate in "High Total Dissolved Solids."

acetonitrile is added to the buffer eluent, perchlorate can be positioned to elute after high chloride, but before high sulfate. The LC TIC chromatogram of 1 ppb in a high dissolved solids matrix is shown in Figure 2.

Quantification Using Internal Standard Perchlorate

EPA Methods 331.0 and 332.0 have evaluated the response of perchlorate in varying ionic strength water and noted that as the ionic strength, or its' conductivity increases, the response for perchlorate decreases. This suppression effect is attributed to the perchlorate partially coeluting with high sulfate where the sulfate suppresses the perchlorate response. Since sample sulfate concentration will vary, the use of an isotopically labeled (Cl^{18}O_4) perchlorate as an internal standard corrects for this problem.

The other concern about sulfate coelution is the presence of $^{34}\text{SO}_4$, present at 4.2% abundance. During the -ESP ionization process, $^{34}\text{SO}_4^{-2}$ is detected as $\text{H}^{34}\text{SO}_4^{-1}$, which has the same MW as perchlorate 99, shown in Figure 2. Thus, if sulfate and perchlorate partially coelute, the accuracy and ion ratio confirmation of perchlorate will be biased.

Using the LC conditions described in Table 1 and adding the labeled perchlorate internal standard, the SIR at m/z 99 calibration is linear from 0.5 to 10 ppb as shown in Figure 3, and for SIR at m/z 101 as shown in Figure 4.

System:	Waters Alliance® System with Waters Micromass ZQ Mass Spectrometer, 432 Conductivity Detector and in series (optional)		
Column:	IC-Pak™ Anion/HR (4.6 x 75 mm, 7 µm) (Polymeric Anion exchange)		
Eluent:	25 mM NH ₄ HCO ₃ , pH10 with NH ₄ OH in 50% AcCN		
Flow Rate:	0.5 mL/min		
Temp:	30 °C		
BackPres:	<1000 psi		
Conductivity:	~1600 mS		
Injection Vol:	100 µL		
MS Tune Conditions for Waters ZQ Single Quadrupole Mass Spectrometer			
Ionization:	-ESP	LM Resolution:	13.5
Capillary (V):	3.00	HM Resolution:	13.5
Cone (V):	45 or 70	Ion Energy:	1.0
Extractor (V):	1	Multiplier (V):	650
RF Lens (V):	0.5	Cone Gas (L/hr):	50
Source Temp:	125 °C	Desolvation Gas:	500
Desolvation Temp:	400		
SIR Acquisition:			
1) 99 and 101@ 300 ms dwell time & 89 and 91@ 100 ms dwell time or			
2) 83 and 85@ 300 ms dwell time & 89 and 91@ 100 ms dwell time			

Table 1: LC/MS method for perchlorate.

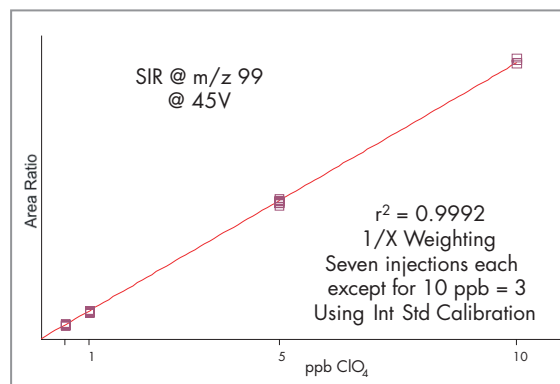


Figure 3. Perchlorate detection limits using the Waters Micromass ZQ single quadrupole mass spectrometer.

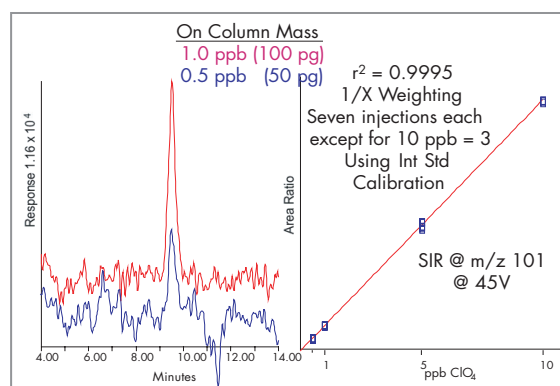


Figure 4. SIR at m/z 101, perchlorate linearity.

Perchlorate Ion Ratio for Analyte Confirmation

Since perchlorate comes in 2 isotopic forms (^{35}Cl and ^{37}Cl), m/z 99 and m/z 101, the peak area ratio of natural perchlorate compares to the labeled internal standard, m/z 107 and 109. If the ion ratios m/z 99 divided by m/z 101 are within $3.08 \pm 20\%$ of each other, then the analyte is confirmed as perchlorate. See Table 2.

ppb ClO ₄ Concentration	Ion Ratio m/z 99/m/z 101	%RSD	Theoretical Ion Ratio 3.08
0.5, n=6	3.42 ± 0.34	10.1%	Method Spec 20% or 10%
1.0, n=7	2.98 ± 0.24	8.1%	
5.0, n=7	3.08 ± 0.23	7.5%	Spec Range 2.45 ↔ 3.67 2.77 ↔ 3.39
10.0, n=3	3.06 ± 0.14	4.6%	
All, n= 23	3.14 ± 0.30	9.6%	

Table 2. Perchlorate ion ratio with the single quadrupole ZQ mass spectrometer.

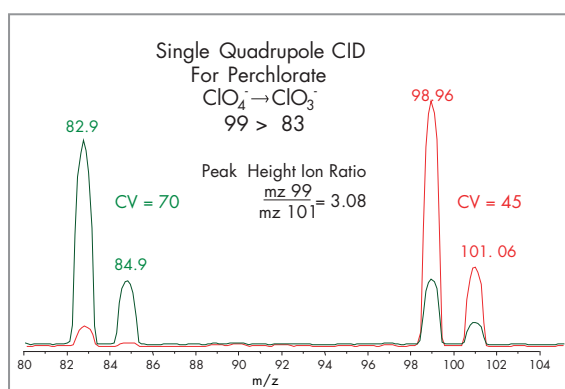


Figure 5. Perchlorate analysis using LC/MS. Continuum presentation at 1 AMU resolution.

An alternative means for perchlorate confirmation uses In-Source CID, which fragments perchlorate, m/z 99, to chlorate, m/z 83, by loss of an oxygen. Perchlorate and chlorate are well resolved such that SIR at 83 will show 2 peaks, the earlier eluting chlorate followed by perchlorate.

This is achieved by increasing the cone voltage to 70V. Figure 6 shows that as the cone voltage increases, the perchlorate 99 and 101 decrease, and their fragments at m/z 83 and 85 respectively increase. SIR at m/z 83 is linear and has a detection limit of 0.5 ppb.

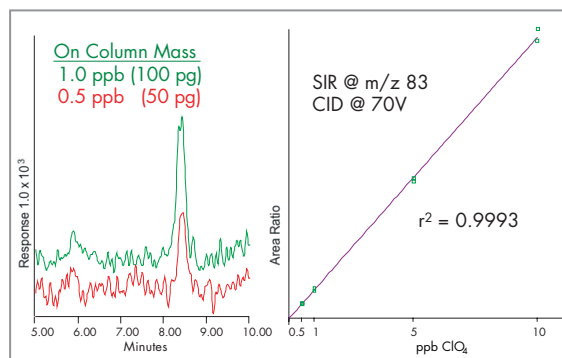


Figure 6. SIR at m/z 83 perchlorate CID linearity.

Recoveries of Perchlorate from Drinking Water

Milford, Massachusetts drinking water, a typical chlorinated drinking water, was spiked with 0.5 and 1.0 ppb perchlorate. The spiked drinking water chromatograms shown in Figure 7 indicate recoveries of 82% for the 1 ppb spike, and 95% for the 0.5 ppb spike. The data indicates that the Waters ZQ single quadrupole mass spectrometer can be used for EPA Methods 331.0 and 332.0 with the ability to meet the required < 1 ppb perchlorate detection limit.

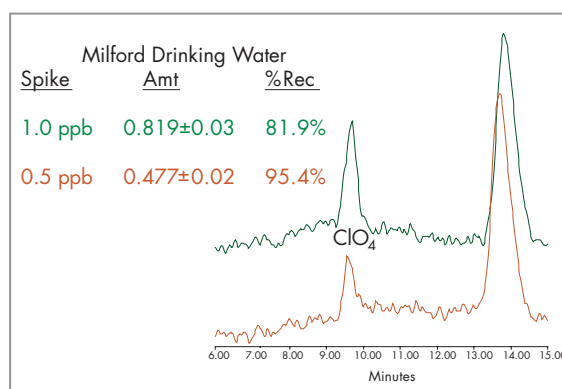


Figure 7. Perchlorate spiked recoveries using the single quadrupole ZQ mass spectrometer.

Other Common Anions Detected by Mass Spectrometry

During the method development process, other common anions were added to the water to see if their presence would effect perchlorate response. With this eluent, perchlorate, NO_2 , NO_3 and PO_4 elute in the same region. Figures 8 and 9 show the chromatography of various inorganic ions with their isotopic ratio. Neither the regulated anions nor the common anions found in drinking water interfere with perchlorate, which allows this method to be used in a high total dissolved solids matrix.

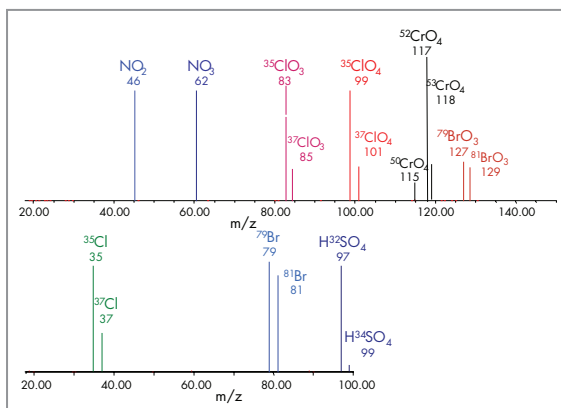


Figure 8. Regulated environmental anions using LC/MS.

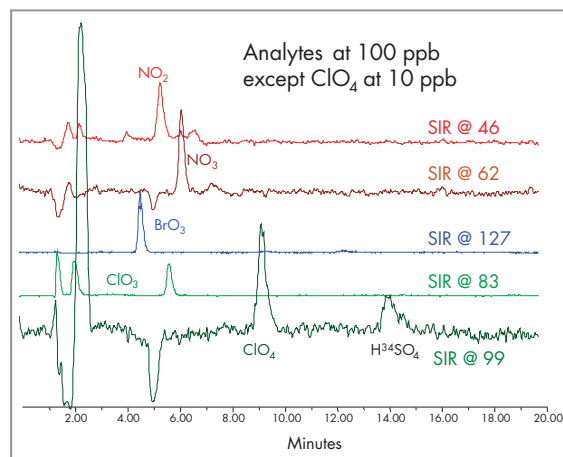


Figure 9. Regulated environmental anion standard chromatograms.

These SIR chromatograms demonstrates the feasibility of using LC/MS to analyze for the other regulated anions, bromate, chlorite, chlorate, perchlorate, nitrite, nitrate and chromate in a single analysis. Figure 10 shows the inorganic profile of a chlorinated drinking water.

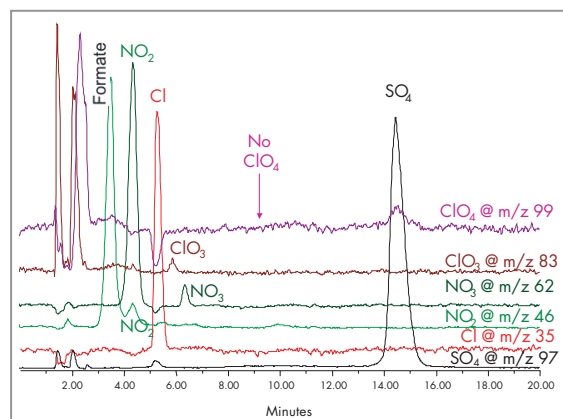


Figure 10. Inorganic profile of a chlorinated drinking water.

Software

Data was acquired and processed using Waters Empower™ Software.

Sales Offices:

Austria 43 1 877 18 07

Australia 61 2 9933 1777

Belgium and Luxembourg 32 2 726 1000

Brazil 55 11 5543 7788

Canada 800 252 4752

China 86 10 8451 8918

Czech Republic 420 2 617 11384

Denmark 45 46 59 8080

Finland 358 9 506 4140

France 33 1 3048 7200

Germany 49 6196 400600

Hong Kong 852 29 64 1800

Hungary 36 1 350 5086

India 91 80 2837 1900

Ireland 353 1 448 1500

Italy 39 02 27 4211

Japan 81 3 3471 7191

Korea 82 2 820 2700

Mexico 52 55 5200 1860

The Netherlands 31 76 508 7200

Norway 47 6 384 6050

Poland 48 22 833 4400

Puerto Rico 787 747 8445

Russia/CIS 7 095 931 9193

Singapore 65 6278 7997

Spain 34 93 600 9300

Sweden 46 8 555 11 500

Switzerland 41 62 889 2030

Taiwan 886 2 2543 1898

UK 44 208 238 6100

US 1 800 252 4752

Waters

WATERS CORPORATION

34 Maple St.

Milford, MA 01757 U.S.A.

T: 508 478 2000

F: 508 872 1990

www.waters.com

For Complete Confidence

Waters, Alliance, MassLynx, Micromass, ZQ and Ion-Pak are trademarks of Waters Corporation.
All other trademarks are property of their respective owners.
©2005 Waters Corporation Produced in the USA August 2005 720001285EN LW-PDF



001