

Kate Yu¹, Peter Alden¹, Li Di², Susan Q. Li², Ed Kerns²¹Waters Corporation, Milford, MA 01757²Wyeth Research, Princeton, NJ 08543

Introduction

The progress of modern drug discovery and development relies heavily on the application of LC/MS/MS technology. In drug discovery, LC/MS/MS is commonly used for various ADME tests; in drug development, it is typically used for quantitative analysis in biological matrices. Experiments are typically run on an atmospheric pressure ionization source (API) with the choice of electrospray ionization (ESI) or atmospheric pressure chemical ionization (APCI). Generally, about 80% of compounds can be analyzed by ESI¹. APCI is the common secondary option for the analysis of compounds that are not ionized by ESI. To determine which ionization mode is more applicable to a particular compound (in terms of ionization and sensitivity), the compound needs to be evaluated in both ESI and APCI. Traditionally, changing from ESI to APCI required the analyst to physically change the ionization source and re-optimize the ion source parameters. This results in lost analysis time, significantly reducing the analytical throughput.

Multi-mode ionization has drawn attention in the field of applied liquid chromatography/mass spectrometry (LC/MS) for its versatility in the analysis of chemically diverse compounds. The expectation is that multi-mode ionization should improve analytical throughput as well as make LC/MS technology more readily adaptable to lab automation. To run an experiment using the ESCi™ Multi-Mode Ionization Source, the mass spectrometer switches rapidly between ESI and APCI during the same analysis, eliminating the need to physically change the ionization source and to

repeat injections for ESI failed samples. The ESCi source is also capable of performing single mode ionization per analysis if required.

This application note demonstrates the feasibility and performance of the ESCi Multi-Mode Ionization Source on a Waters® ACQUITY UPLC™-Quattro Premier™ System. In this work, a quantitative LC/MS/MS analysis of a four compound mixture, Figure 1, was performed.

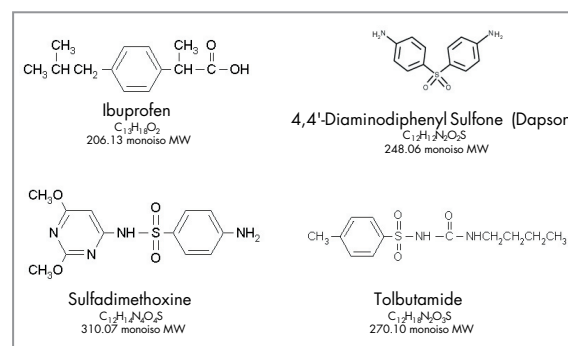


Figure 1. Chemical structures of test standards.

Experimental Conditions

LC Conditions:

Instrument: Waters ACQUITY UPLC System

Column: Waters ACQUITY UPLC BEH C₁₈ Column, 2.1 x 50 mm, 1.7 µm

Flow Rate: 1 mL/minute
(400 mL/minute into the MS)

Mobile Phase: A. 10 mM NH₄OAc in ACN/Water 10/90, pH 5.0
B. 10 mM NH₄OAc in ACN/Water 95/5, pH 5.0

Gradient:

Time	A%	Curve
0.00	90%	6
0.4	5%	6
0.5	5%	1
1.0	90%	1

Injection Volume: 5 µL

MS Conditions:

Instrument: Waters Micromass® Quattro Premier Tandem Quadrupole Mass Spectrometer

Software: MassLynx™ 4.0 SP4 with ESCi enabled

Tune Page Parameters:

ESCI Multi-mode ionization enabled from tune page

ESI Capillary Voltage: 3.0 kV

APCI Corona Current: 4.0 µA

Source Temp.: 130 °C

Desolvation Temp.: 420 °C

Desolvation Gas Flow: 980 L/Hr

Cone Gas Flow: 50 L/Hr

Data Collection: MRM with simultaneous ESI+/ESI-/APCI-/APCI+ on-the-fly during each injection

Inter-scan Delay: 20 ms

Inter-Channel Delay: 5 ms

Dwell Times: ESI+: 5 ms APCI-: 10 ms
ESI-: 20 ms APCI+: 10 ms

Results and Discussion:

ESCI Multi-Mode Ionization is easily applied on the Quattro Premier using the standard electrospray probe together with an APCI corona needle and enabling the ESCi option from the MassLynx tune page. The Quattro Premier mass spectrometer switches between polarities and/or ionization modes on-the-fly with only 20 ms delay. For the MRM data collection, the minimum inter-channel delay and dwell time was 5 ms. This enables ESCi technology to be easily applied to rapid chromatographic separations.

The MS optimization results² for the 4 standards and the ionization mode chosen for the quantitative analysis of each compound are listed in Table 1. For Tolbutamide, the best ionization mode is ESI+. However, for demonstration purpose in this work, we have chosen the APCI- mode for this compound so that simultaneous quantification was performed in all four ionization modes during a single injection.

	ESI+	ESI-	APCI+	APCI-	Ionization Mode	MRM Transition
Daspone	+++	-	+++	-	ESI+	248.9>156.0
Ibuprofen	-	++	-	+	ESI-	205.2>161.0
Sulfadimethoxine	+++	+	+++	+	APCI+	311.2>155.9
Tolbutamide	+++	+++	++	++	APCI-	269.0>170.0

Table 1. Ionization mode results for standards.

Figure 2 shows the multiple reaction monitoring (MRM) chromatograms of the four standards. The chromatograms were acquired using the optimal ionization modes shown in Table 1. LC separation was obtained by the ACQUITY UPLC™ system with a 1 minute run time. The injection to injection cycle time was 1.5 minutes. The peak width for each analyte was approximately 1.8 seconds at the base.

For each of the chromatographic peaks, approximately 15 data points were obtained, which was sufficient for a full quantitative evaluation to be conducted for this ESCi method. Figure 3 shows the calibration curves of the 4 standards, and Table 2 lists their dynamic ranges, the linearities

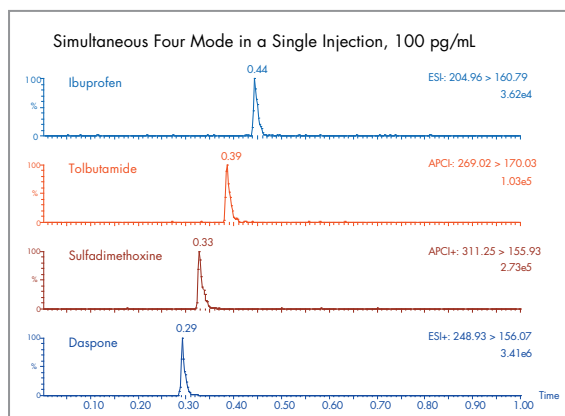


Figure 2. MRM chromatograms of the four standards.

and the limits of detection. The analysis was completed simultaneously in four ionization modes during a single injection (ESI+/ESI-/APCI-/APCI+). Full quantitative evaluation demonstrated up to 4 orders of magnitude of linear range and the limit of detection was as low as 50 fg on column.

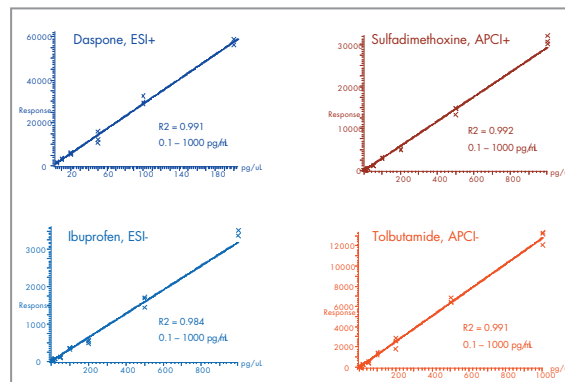


Figure 3. Calibration curves for the four standards.

	Ionization Mode	Linear Range (ng/mL)	r ²	Limit of Detection (ng/mL, 5 nL Inj)
Daspone	ESI+	0.01 - 200	0.991	0.01
Ibuprofen	ESI-	0.1 - 100	0.984	0.1
Sulfadimethoxine	APCI+	0.1 - 1000	0.992	0.01
Tolbutamide	APCI-	0.1 - 1000	0.992	0.1

Table 2. ESCi quantitative analysis results

Conclusion:

We have demonstrated a quantitative LC/MS/MS study of a 4 compound mixture using ESCi Multimode Ionization. As shown in a previous LC/MS study, the "ESCi source could identify about 10% more samples than the standard ESI or APCI sources from the plate analysis"¹. Our LC/MS/MS results also demonstrated that the ESCi Multi-Mode Ionization offers time-savings in analysis and therefore can further improve analytical throughput. As a result, the ESCi Multi-mode ionization can be applied for the analysis of a large number of compounds with high speed and has the ability to ionize compounds with diverse structures for analysis in drug discovery and development.

Reference:

1. R. Gallagher, M. Balogh, P. Davey, M. Jackson, I. Sinclair, and L. Southern, *Analytical Chemistry*, 75, p 973-977, 2003.
2. K. Yu, P. Alden, L. Di, S. Li, and E. Kerns, "Applications of ESCi-UPLC™/MSMS in Drug Discovery and Development by ACQUITY UPLC™-QuattroPremier", 21st Montreux LC/MS Symposium on LC/MS and Related Topics, Montreux, Switzerland, November 2004.

Sales Offices:

AUSTRIA 43 1 877 18 07
AUSTRALIA 61 2 9933 1777
BELGIUM AND LUXEMBOURG 32 2 726 1000
BRAZIL 55 11 5543 7788
CANADA 800 252 4752 X2205
CZECH REPUBLIC 420 2 617 11384
DENMARK 45 46 59 8080
FINLAND 358 9 506 4140
FRANCE 33 1 3048 7200
GERMANY 49 6196 400600
HONG KONG 852 29 64 1800
HUNGARY 36 1 350 5086
INDIA 91 80 2837 1900
IRELAND 353 1 448 1500
ITALY 39 02 27 4211
JAPAN 81 3 3471 7191
KOREA 82 2 820 2700
MEXICO 52 55 5524 7636
THE NETHERLANDS 31 76 508 7200
NORWAY 47 6 384 6050
PEOPLE'S REPUBLIC OF CHINA 86 10 8451 8918
POLAND 48 22 833 4400
PUERTO RICO 787 747 8445
RUSSIA/CIS 7 095 931 9193
SINGAPORE 65 6278 7997
SPAIN 34 93 600 9300
SWEDEN 46 8 555 11 500
SWITZERLAND 41 62 889 2030
TAIWAN 886 2 2543 1898
UK 44 208 238 6100
US 800 252 4752

Waters

WATERS CORPORATION
 34 Maple St.
 Milford, MA 01757 U.S.A.
 T: 508 478 2000
 F: 508 872 1990
www.waters.com

For Complete Confidence

Waters, ACQUITY UPLC, UPLC, ESCi, Quattro Premier and Masslynx are trademarks of Waters Corporation. All other trademarks are property of their respective owners.
 ©2005 Waters Corporation Produced in the USA March 2005 720001097EN LW-PDF

