

Keith Worrall, Anthony Newton

Waters Corporation, Atlas Park, Simonsway, Manchester.

Introduction

The application of GC/MS for trace analysis is commonplace in the modern laboratory. Over time, required limits of detection decrease, whilst the sample matrices to be analysed become more complex.

Extraction and cleanup methods can aid the analyst by reducing the complexity of the final sample extract, but can also be time consuming, inefficient and costly.

The high selectivity of GC/MS/MS allows the simplification of cleanup procedures while maintaining high selectivity and sensitivity when targeting trace components in complex sample extracts.

Results and discussion

Waters® Micromass® Quattro micro™ GC offers three possible acquisition modes for quantitative analysis: full scan, selected ion recording (SIR) and multiple reaction monitoring (MRM).

To investigate the difference between these modes, a calibration standard and an extracted Carp sample were injected in each mode.

First, the calibration standard and the matrix extract were acquired in full scan mode, scanning from 50 to 600 Da. From these chromatograms, selected compound specific mass chromatograms viewing peaks from the molecular ion cluster of an internal standard (m/z 317.9) and analyte (m/z 305.9) were generated.

Figures 1 and 2 present the extracted mass chromatograms for the calibration standard (Figure 1) and the Carp extract (Figure 2) in full scan mode. As can be seen from the chromatograms, the peaks for the calibration standard are clearly visible, but no information can be obtained from the matrix extract.

The calibration standard and Carp extract were then

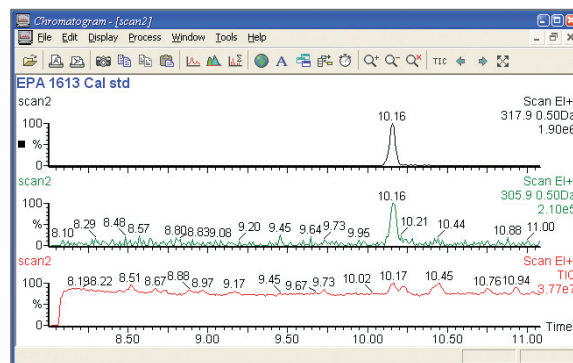


Figure 1. Full scan calibration standard injection.

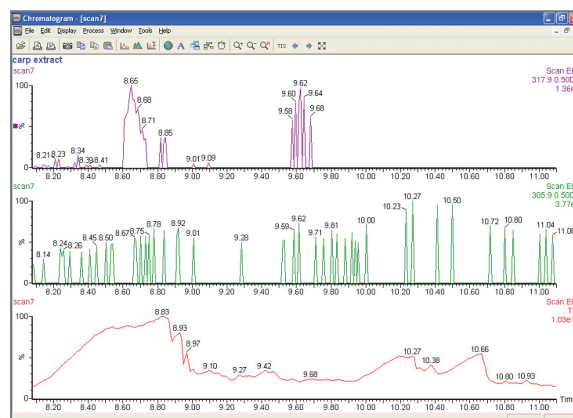


Figure 2. Full scan Carp extract injection.

injected in SIR mode, monitoring the ions of interest for the internal standard (m/z 317.93) and analyte (m/z 305.89). Figures 3 and 4 present the acquired chromatograms for the calibration standard (Figure 3) and the matrix extract (Figure 4).

The calibration standard shows much improved signal to noise (S/N) ratios for both the internal standard and analyte peaks; however, the matrix injection shows a vast improvement when compared with full scan analysis, but does not show good selectivity for the internal standard. The analyte trace does not really offer any true quantitative information.

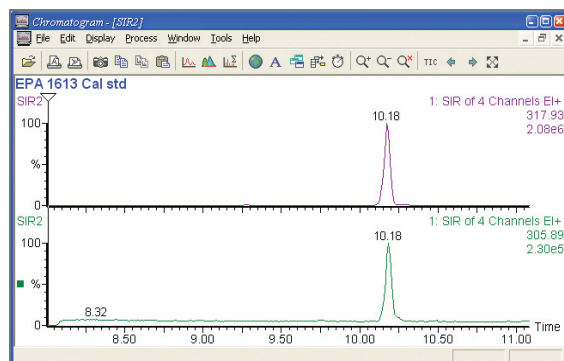


Figure 3. SIR calibration standard injection.

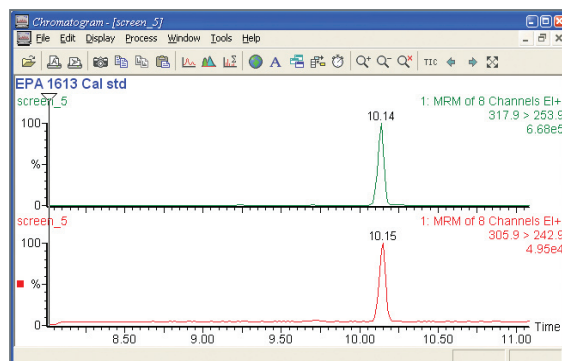


Figure 5. MRM calibration standard injection.

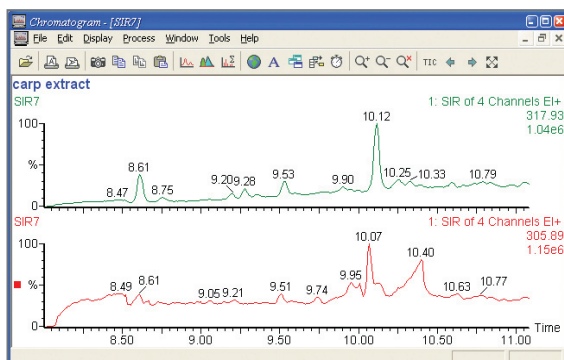


Figure 4. SIR Carp extract injection.

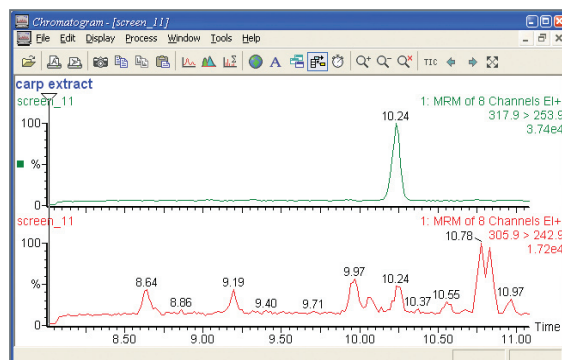


Figure 6. MRM Carp extract injection.

The instrument was then tuned in daughter ion mode, tuning on daughters of heptacosyl. The calibration standard and matrix extract were then acquired in multiple reaction monitoring (MRM) mode, monitoring compound specific transitions. In this mode of operation, the first quadrupole monitors the precursor mass, which then undergoes collisionally induced fragmentation in a collision cell, aided by the presence of a collision gas and collision energy (eV). The second quadrupole then monitors the product mass, which is normally selected to be a compound specific fragment.

Figures 5 and 6 present the calibration standard injection (Figure 5) and the matrix extract injection (Figure 6).

The calibration standard shows similar signal to noise when compared with the SIR standard injection. Upon inspection of the matrix extract chromatogram, it can now be clearly seen that a much higher degree of selectivity is offered by using MRM, with the internal standard (317.9 > 253.9) having good S/N at 10.24 minutes, and an analyte peak (305.9 > 242.9) is now distinguishable at 10.24 minutes. All other peaks seen in the analyte chromatogram are now from other isomers of the target compound.

Conclusions

Full scan analysis has a low degree of selectivity, given that a comparatively wide mass range is acquired, with all masses stored by the data system. Full scan analysis is invaluable for the identification of unknown peaks, and is essential during method development.

SIR analysis gives a much higher degree of selectivity and greater sensitivity when compared with full scan analysis, but when performed on a quadrupole instrument, complex extracts will require a high degree of specific cleanup to enable the analyst to obtain reliable results.

Analysis of complex sample extracts using MRM acquisition offers the analyst the highest degree of sensitivity and selectivity, and can be possibly the only way to obtain reliable results without the need for time consuming clean-up processes, or expensive high resolution instrumentation.

Sales Offices:

AUSTRIA 43 1 877 18 07

AUSTRALIA 61 2 9933 1777

BELGIUM AND LUXEMBOURG 32 2 726 1000

BRAZIL 55 11 5543 7788

CANADA 800 252 4752 X2205

CZECH REPUBLIC 420 2 617 11384

DENMARK 45 46 59 8080

FINLAND 358 9 506 4140

FRANCE 33 1 3048 7200

GERMANY 49 6196 400600

HONG KONG 852 29 64 1800

HUNGARY 36 1 350 5086

INDIA 91 80 2837 1900

IRELAND 353 1 448 1500

ITALY 39 02 27 4211

JAPAN 81 3 3471 7191

KOREA 82 2 820 2700

MEXICO 52 55 5524 7636

THE NETHERLANDS 31 76 508 7200

NORWAY 47 6 384 6050

PEOPLE'S REPUBLIC OF CHINA 86 10 8451 8918

POLAND 48 22 833 4400

PUERTO RICO 787 747 8445

RUSSIA/CIS 7 095 931 9193

SINGAPORE 65 6278 7997

SPAIN 34 93 600 9300

SWEDEN 46 8 555 11 500

SWITZERLAND 41 62 889 2030

TAIWAN 886 2 2543 1898

UK 44 208 238 6100

US 800 252 4752

Waters

WATERS CORPORATION
34 Maple St.
Milford, MA 01757 U.S.A.
T: 508 478 2000
F: 508 872 1990
www.waters.com

Opt-In! My Profile
www.waters.com

For Complete Confidence

Waters, Micromass and Quattro micro are trademarks of Waters Corporation.
All other trademarks are property of their respective owners.
©2004 Waters Corporation Printed in the USA July 2004 720000876EN LW-CV

