

ADVANCING ATTRIBUTE CONTROL OF ANTIBODIES AND ITS DERIVATIVES USING HIGH RESOLUTION ANALYTICS

Henry Shion¹, Jing Fang¹, William Alley¹, Barbara Sullivan², Nick Tomczyk³, Liuxi Chen¹, Ying-Qing Yu¹, Weibin Chen¹
¹Scientific Operations, Waters Corporation, Milford, MA 01757; ²Waters Corporation, Beverly, MA 01915; ³Waters Corporation, Wilmslow, UK SK9 4AX

- OVERVIEW
- This poster shows the performance of the new Vion IMS QToF mass spectrometer in intact mass analysis (including subunits), peptide mapping, and released glycan analysis for the characterization of monoclonal antibodies and ADCs.
 - We also demonstrate the utility of an integrated high-resolution analytics platform, consisting of a Vion IMS QToF mass spectrometer and Unifi Scientific Informatics System, to understand the critical quality attributes of mAbs and Lysine-conjugated ADCs.
- INTRODUCTION
- The analytical characterization of biotherapeutics is challenging and requires the use of a plethora of orthogonal techniques such as chromatography and mass spectrometry.
 - The analytical characterization of mAbs (ADCs, bispecific Abs) usually follows a multi-level workflow, where bio-pharmaceuticals are studied at the intact protein (top) level, after enzymatic digestion into smaller mAb subdomains (subunits, the middle-level), or after proteolytic digestion using a combination of enzymes to generate peptides (the bottom level) or the released glycans.
 - The data presented in this poster demonstrates the performance of the Vion, when used in the multi-level workflow, for the characterization of mAbs and ADCs. It also highlights the integrated nature of the high-resolution MS with Unifi informatics system to cover data acquisition, data processing and reporting in a single analytical platform.



Figure 1. The Vion™ IMS QToF™ Mass Spectrometer and Unifi® Scientific Information System. Unifi provides a single platform for instrument control, data processing and reporting.

TO DOWNLOAD A COPY OF THIS POSTER, VISIT WWW.WATERS.COM/POSTERS

EXPERIMENTAL

Sample Preparation

Intact Mass Analysis

Waters mAb standard (1 mg) was dissolved in 25 mM NH4HCO3 to prepare a stock solution of 1.0 mg/mL. The stock solution was serially diluted with 25 mM NH4HCO3 to prepare mAb solutions with a range of concentrations for LC/MS analysis. The lowest concentration of the mAb solution was 1.0 µg/mL.

Subunit Analysis

Waters mAb standard was reduced with DTT at 37°C for 30 min, and then alkylated with iodoacetamide in dark for 45 min. An aqueous solution with 3% acetonitrile/0.1% FA was added to terminate the reduction/alkylation reaction. A solution of 0.1 µg/µL was used for LC/MS analysis.

Peptide Mapping Analysis

Trastuzumab sample was reduced with DTT at 37°C and then alkylated with IAM before trypsin digestion for 1hr. An aqueous solution with 10% acetic acid was added to terminate trypsin digestion. The solution was diluted to desired concentration for LC/MS analysis.

Released N-linked Glycan Analysis

The Waters GlycoWorks Sample Preparation Kit was used to generate RFMS labelled glycan from IgG1.

LC: ACQUITY UPLC H-Class System

MS: Vion™ IMS QToF™ Mass Spectrometer

LC Conditions

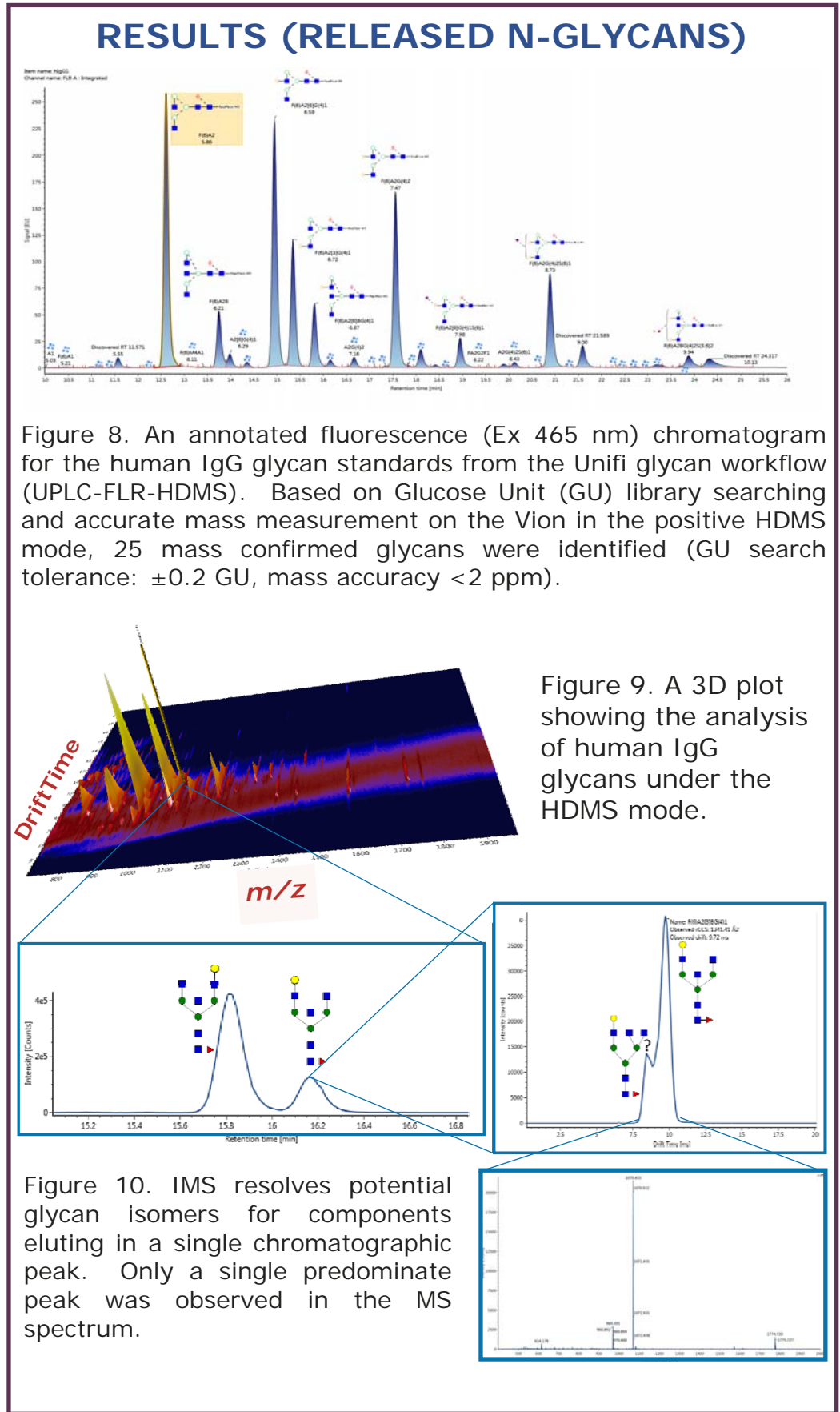
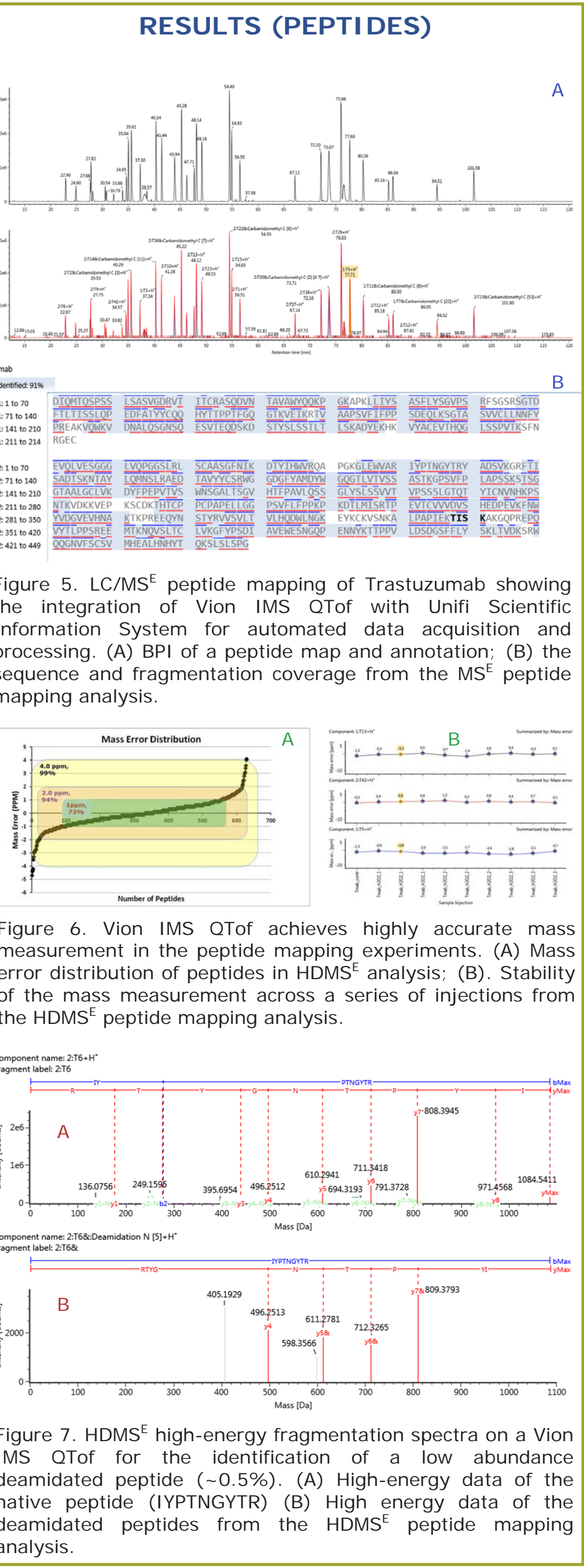
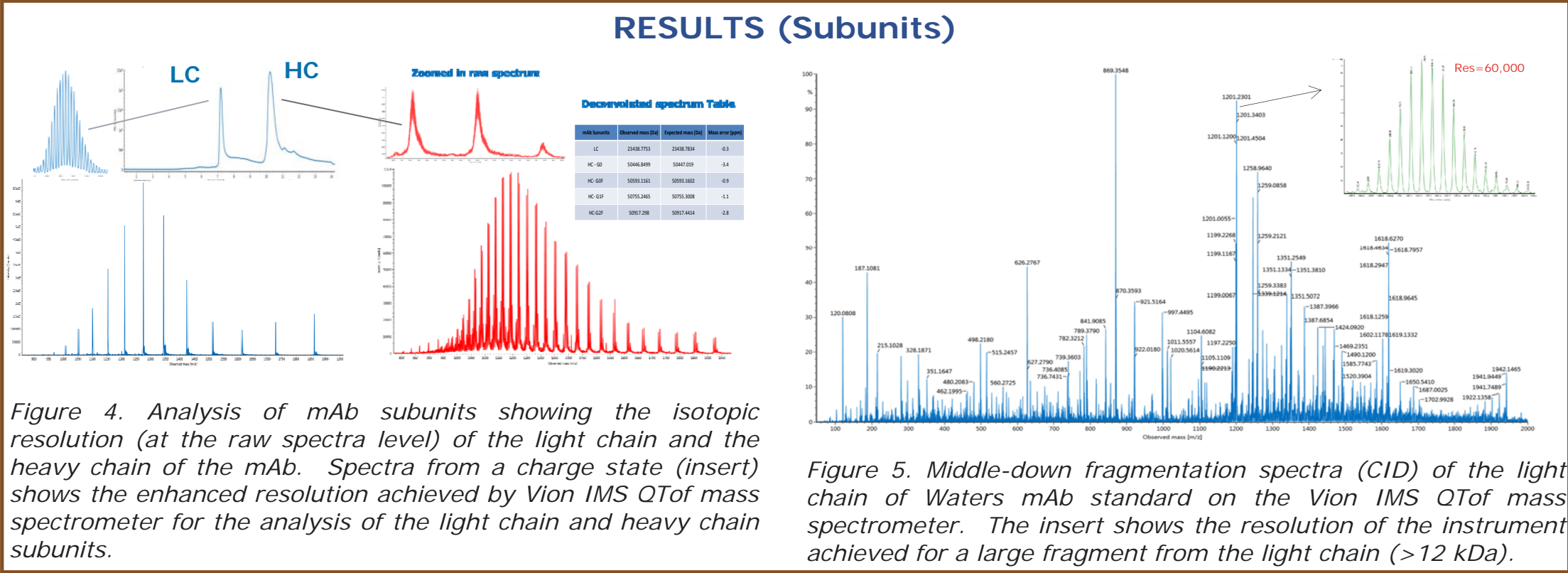
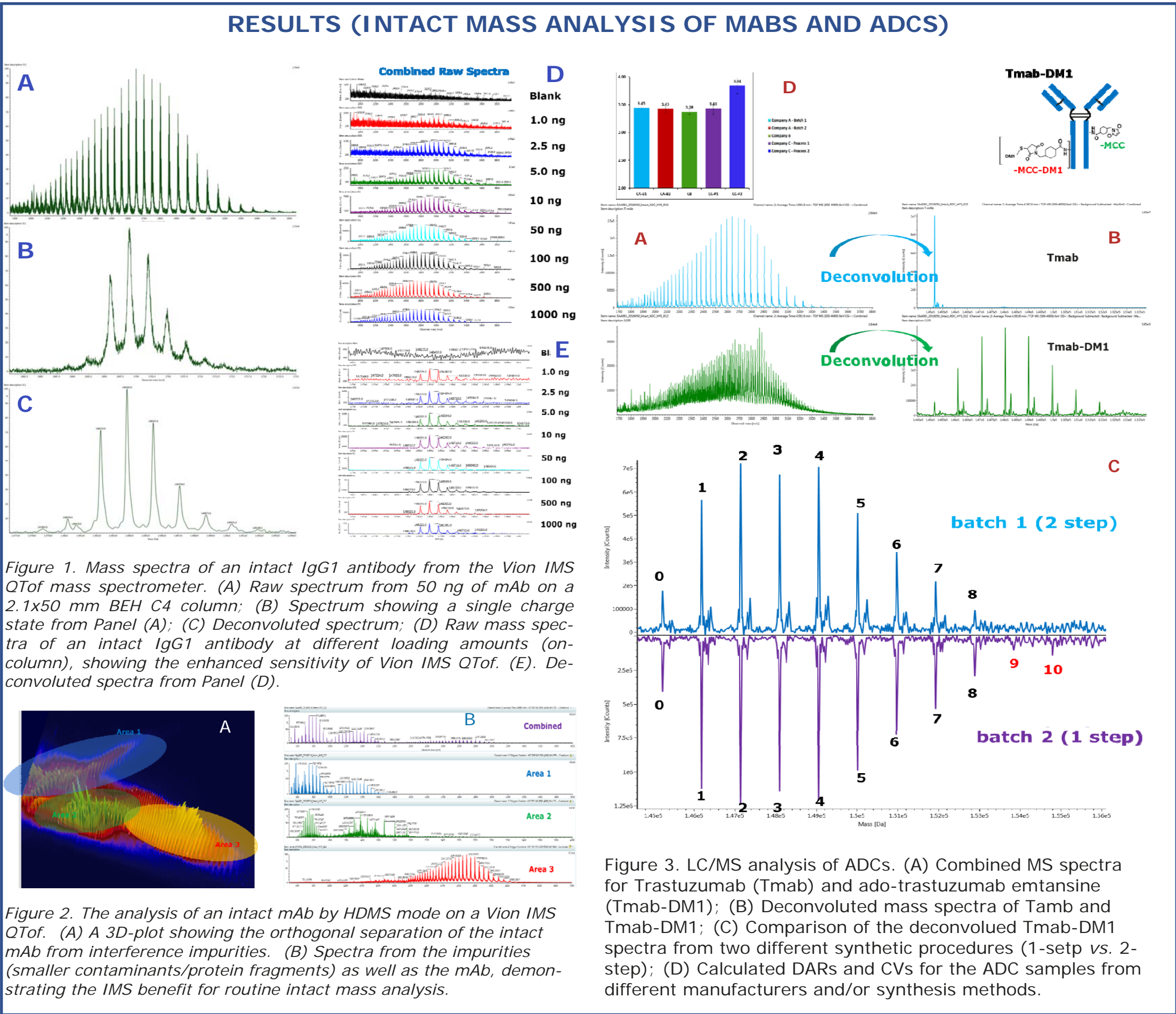
Analysis Type	Columns	Column Temperature (°C)	Mobile Phases A B C	Gradients	Flow Rate (mL/min)	TUV Wavelength /FLR (nm)
Intact	ACQUITY UPLC Protein BEH C4, 300Å, 1.7 µm, 2.1 X 80 mm	80	H2O ACN	1% FA in H2O 10% B to 90% B in 4 mins	0.3	280
Subunit	ACQUITY UPLC Protein BEH C4, 300Å, 1.7 µm, 2.1 X 80 mm	80	H2O ACN	1% FA in H2O 27% B to 31% B in 6.3 min; 31% B to 40% B in 2 mins	0.3	280
Peptides	ACQUITY UPLC C18, 150Å, 1.7 µm, 2.1 X 150 mm	65	1% FA in H2O 1% FA in ACN	N/A 1% B to 33% B in 120 mins	0.2	215
Glycans	ACQUITY UPLC Glycan BEH Amide Column, 250Å, 1.7 µm, 2.1 X 150 mm	60	50 mM Ammonium Perchlorate pH=4.4 ACN	N/A 75% B to 54% B in 35 mins	0.4	265 (Collision) 425 (Fluorescence)

MS Conditions:

Analysis Type	Capillary Voltage (kV)	Cone (V)	Source Temperature (°C)	Desolvation Temperature (°C)	Desolvation Gas (L/h)	Acquisition Mode
Intact	3.0	150	150	500	800	Sensitivity
Subunit	3.0	150	150	500	800	Sensitivity/Resolution
Peptides	3.0	40	100	250	600	Sensitivity
Glycans	3.0	40	120	250	600	Sensitivity

Informatics System

Unifi® Scientific Information System



- CONCLUSIONS
- Increased sensitivity is achieved across a wide range of analytes including intact mAbs, ADCs and their subunits, peptides and glycans.
 - The Vion IMS QToF QToF is capable of achieving near isotopic resolution of proteins with a MW of ~25 kDa, yielding low ppm mass accuracies results under the routine LC/MS conditions. The improved resolution provides greater confidence in the mass measurement of large peptide/small proteins, which is critical for effective middle-down fragmentation analysis.
 - The IMS capability offered by the Vion IMS QToF allows the differentiation of glycan isomers in a routine LC-FLR-HDMS analysis, and provides better understanding for the glycan structures.
 - The sensitivity gain with no reduction in resolution by the Vion IMS QToF enhances ion-feature definition that enables detection of minor components/glycoforms of proteins.
 - The continued development by Waters in analytical technologies for biological molecules have permitted more in-depth characterization of mAb and ADCs.